



Pompeii – Bastille SSAA

Pag.

02	Full score combo C instrument
10	Full score combo Bb instrument
18	Full score combo Eb instrument
26	Full score combo 4 extra staves
38	Full score small combo
48	Full score small combo 2 extra staves
63	Full score vocals (SSAA) piano advanced
76	Full score vocals (SSAA) piano moderated
87	Vocals (SSAA)
97	C instrument
99	Bb instrument
101	Eb instrument
103	Piano Combo
106	Piano Solo Advanced
110	Piano Solo Intermediate
114	Synthesizer
118	Guitar
120	Bassguitar
122	Drumkit
125	Percussion
128	Leadsheet (melody, lyrics, chords)
132	Lyrics

Pompeii

- Bastille -

Words and Music by Dan Smith
Arranged by Hans Reintjes
Original Key A major

DEMO

DEMO

Pop/Rock $\text{♩} = 128$

A

B

Soprano 1
Soprano 2
Alto 1
Alto 2
C Instr.
Piano Combo
Synthesizer
Guitar
Bass Guitar
Drums
Percussion

Eh... eh oh e - oh, eh
Eh... eh oh e - oh, eh
Eh... eh oh e - oh, eh
Eh... eh oh e - oh, eh

D A F#m E D A F#m E D

No synth or guitar play small notes
(staccato)
Warm pad (legato)
Sawtooth (staccato)
El. Guitar (distortion muted)

Pompeii 3
SSAA Combo C

27

S 1
love. Grey clouds roll o - ver the hills bring - ing dark - ness from a - bove. But if you close your eyes,

S 2
love. Grey clouds roll o - ver the hills bring - ing dark - ness from a - bove.

A 1
love. Ah bove. But if you close your eyes,

A 2
love. Ah bove. But if you close your eyes,

C
F#m E D A F#m E

P.C.

Synth

Gtr.

Bass

Dr.

Perc.

E

34

S 1
— does it al - most feel like no - thing changed at all. And if you close your eyes, — does it al - most feel like you've been here be - fore. — How am

S 2
Eh oh e - oh, eh eh oh e - oh, eh eh oh e - oh, eh eh oh e - oh. Eh eh oh e - oh, eh eh oh e - oh, eh eh oh e - oh, eh eh oh e - oh. How am

A 1
— does it al - most feel like no - thing changed at all. And if you close your eyes, — does it al - most feel like you've been here be - fore. —

A 2
— does it al - most feel like no - thing changed at all. And if you close your eyes, — does it al - most feel like you've been here be - fore. —

C
D A F#m E D A F#m E

P.C.

Synth
Synth. Strings (legato)

Gtr.
D5 A5 F#5 E5 D5 A5 F#5 E5
El. Guitar (distortion)

Bass

Dr.
Cowbell

Perc.

58

S 1 clouds roll o-ver the hills bring-ing dark-ness from a-bove. But if you close your eyes, does it al-most feel like no-thing changed at all.

S 2 clouds roll o-ver the hills bring-ing dark-hills bring-ing ness from. Eh oh e-oh, eh eh oh e-oh, eh eh oh e-oh, eh

A 1 Ah from a-bove. But if you close your eyes, does it al-most feel like no-thing changed at all.

A 2 Ah from a-bove. But if you close your eyes, does it al-most feel like no-thing changed at all.

C D A F#m D A F#m

P.C.

Synth. Strings (legato)
Sawtooth (staccato)

Gtr. D5 A5 F#5
El. Guitar (distortion)

Bass

Dr. Cowbell

Perc.

66

S 1 And if you close your eyes, does it al-most feel like you've been here be-fore. How am I gon-na be an op-ti-mist a-bout this? How am

S 2 eh oh e-oh. Eh eh oh e-oh, eh eh oh e-oh, eh eh oh e-oh, eh eh oh e-oh. How am I gon-na be an op-ti-mist a-bout this? How am

A 1 And if you close your eyes, does it al-most feel like you've been here be-fore. Ah.

A 2 And if you close your eyes, does it al-most feel like you've been here be-fore. Ah.

C E D A F#m E D A E

P.C.

Synth

Gtr. E5 D5 A5 F#5 E5 D5 A5 E5 N.C.

Bass

Dr. Handclap

Perc.

91

S 1
— were do we be - gin? The rub - ble or our sins? But if you close your eyes, does it al - most feel like no -

S 2
clouds roll o - ver the hills bring - ing dark - ness from a - bove. Eh oh e - oh, eh eh oh e - oh, eh

A 1
clouds roll o - ver the hills bring - ing dark - ness from a - bove. But if you close your eyes, does it al - most feel like no -

A 2
— were do we be - gin? The rub - ble or our sins? But if you close your eyes, does it al - most feel like no -

C

P.C.
D A A/g# F#m E D A

Synth
Synth. Strings (legato)
Sawtooth (staccato)

Gtr.

Bass

Dr.

Perc.

98

S 1
- thing changed at all. And if you close your eyes, does it al - most feel like you've been here be - fore. Oh, how am I gon - na be an op - ti - mist a - bout

S 2
— eh oh e - oh, eh eh oh e - oh. Eh eh oh e - oh, eh eh oh e - oh, eh eh oh e - oh, eh eh oh e - oh. how am I gon - na be an op - ti - mist a - bout

A 1
- thing changed at all. And if you close your eyes, does it al - most feel like you've been here be - fore. Ah.

A 2
- thing changed at all. And if you close your eyes, does it al - most feel like you've been here be - fore. Ah.

C

P.C.
F#m E D A F#m E D A

Synth

Gtr.
F#5 E5 D5 A5 F#5 E5 D5 A5

Bass

Dr.

Perc.
Handclap

Pompeii

- Bastille -

Words and Music by Dan Smith
Arranged by Hans Reintjes
Original Key A major

DEMO

VERSE

Pop/Rock ♩ = 128

A

B

Soprano 1
Soprano 2
Alto 1
Alto 2
Bb Instr.
Piano Combo
Synthesizer
Guitar
Bass Guitar
Drums
Percussion

Eh ___ eh oh e - oh, eh
Eh ___ eh oh e - oh, eh
Eh ___ eh oh e - oh, eh
Eh ___ eh oh e - oh, eh
Eh ___ eh oh e - oh, eh

D A F#m E D A F#m E D
No synth, or guitar play small notes
(staccato)
Warm pad (legato)
Sawtooth (staccato)
El. Guitar (distortion muted)
8th

© www.ChorusOnline.com / 0031 (0) 6 - 41 57 77 56

Pompeii 3
SSAA Combo Bb

27

S 1
love. Grey clouds roll o-ver the hills bring-ing dark-ness from a-bove. But if you close your eyes,

S 2
love. Grey clouds roll o-ver the hills bring-ing dark-ness from a-bove.

A 1
love. Ah bove. But if you close your eyes,

A 2
love. Ah bove. But if you close your eyes,

Bb

P.C.
F#m E D A F#m E

Synth

Gtr.

Bass

Dr.

Perc.

E

34

S 1
— does it al-most feel like no-thing changed at all. And if you close your eyes, does it al-most feel like you've been here be-fore. How am

S 2
Eh oh e-oh, eh eh oh e-oh, eh eh oh e-oh, eh eh oh e-oh, Eh eh oh e-oh, eh eh oh e-oh, eh eh oh e-oh, eh eh oh e-oh. How am

A 1
— does it al-most feel like no-thing changed at all. And if you close your eyes, does it al-most feel like you've been here be-fore.

A 2
— does it al-most feel like no-thing changed at all. And if you close your eyes, does it al-most feel like you've been here be-fore.

Bb

P.C.
D A F#m E D A F#m E

Synth
Synth. Strings (legato)

Gtr.
D5 A5 F#5 E5 D5 A5 F#5 E5
El. Guitar (distortion)

Bass

Dr.

Perc.
Cowbell

H

58

S 1 clouds roll o - ver the hills bring - ing dark - ness from a - bove. But if you close your eyes, does it al - most feel like no - thing changed at all.

S 2 clouds roll o - ver the hills bring - ing dark - hills bring - ing ness from Eh oh e - oh, eh eh oh e - oh, eh eh oh e - oh, eh

A 1 Ah from a - bove. But if you close your eyes, does it al - most feel like no - thing changed at all.

A 2 Ah from a - bove. But if you close your eyes, does it al - most feel like no - thing changed at all.

Bb

P.C. D A F#m D A F#m

Synth. Strings (legato)
Sawtooth (staccato)

Gtr. D5 A5 F#5
El. Guitar (distortion)

Bass

Dr.

Perc. Cowbell

66

S 1 _ And if you close your eyes, does it al - most feel like you've been here be - fore. How am I gon - na be an op - ti - mist a - bout this? How am

S 2 _ eh oh e - oh. Eh eh oh e - oh, eh eh oh e - oh, eh eh oh e - oh, eh eh oh e - oh. How am I gon - na be an op - ti - mist a - bout this? How am

A 1 _ And if you close your eyes, does it al - most feel like you've been here be - fore. Ah.

A 2 _ And if you close your eyes, does it al - most feel like you've been here be - fore. Ah.

Bb

P.C. E D A F#m E D A E

Synth.

Gtr. E5 D5 A5 F#5 E5 D5 A5 E5 N.C.

Bass

Dr.

Perc. Handclap

Pompeii 7

SSAA Combo Bb

J

91

S 1
...were do we be - gin? The rub - ble or our sins? But if you close your eyes, does it al - most feel like no - thing changed at all.

S 2
clouds roll o-ver the hills bring-ing dark-ness from a - bove. Eh oh e - oh, eh eh oh e - oh, eh eh oh e - oh, eh

A 1
clouds roll o-ver the hills bring-ing dark-ness from a - bove. But if you close your eyes, does it al - most feel like no - thing changed at all.

A 2
...were do we be - gin? The rub - ble or our sins? But if you close your eyes, does it al - most feel like no - thing changed at all.

Bb

P.C.
D A A/g# F#m E D A F#m

Synth
Synth. Strings (legato)
Sawtooth (staccato)

Gtr.
D5 A5 F#5

Bass

Dr.

Perc.

99

S 1
...And if you close your eyes, does it al - most feel like you've been here be-fore. Oh, how am I gon-na be an op - ti-mist a-bout this? How am

S 2
eh oh e - oh. Eh eh oh e - oh, eh eh oh e - oh, eh eh oh e - oh, eh eh oh e - oh, how am I gon-na be an op - ti-mist a-bout this? How am

A 1
...And if you close your eyes, does it al - most feel like you've been here be-fore. Ah

A 2
...And if you close your eyes, does it al - most feel like you've been here be-fore. Ah

Bb

P.C.
E D A F#m E D A E

Synth

Gtr.
E5 D5 A5 F#5 E5 D5 A5 E5 N.C.

Bass

Dr.

Perc.
Handclap



SSAA Combo Eb

Pompeii

- Bastille -

Words and Music by Dan Smith
Arranged by Hans Reintjes
Original Key A major

DEMO

VERSE

Pop/Rock $\text{♩} = 128$

A

B

Soprano 1
Soprano 2
Alto 1
Alto 2
Eb Instr.
Piano Combo
Synthesizer
Guitar
Bass Guitar
Drums
Percussion

Eh__eh oh e-oh, eh
Eh__eh oh e-oh, eh
Eh__eh oh e-oh, eh
Eh__eh oh e-oh, eh

D A F#m E D A F#m E D

No synth, or guitar play small notes
Warm pad (legato)
Sawtooth (staccato)
El. Guitar (distortion muted) $\text{♩} = 128$

© www.ChorusOnline.com / 0031 (0) 6 - 41 57 77 56

Pompeii 3
SSAA Combo Eb

27

S 1
love. Grey clouds roll o-ver the hills bring-ing dark-ness from a-bove. But if you close your eyes,

S 2
love. Grey clouds roll o-ver the hills bring-ing dark-ness from a-bove.

A 1
love. Ah bove. But if you close your eyes,

A 2
love. Ah bove. But if you close your eyes,

Eb

P.C.
F#m E D A F#m E

Synth

Gtr.

Bass

Dr.

Perc.

E

34

S 1
— does it al-most feel like no-thing changed at all. And if you close your eyes, — does it al-most feel like you've been here be-fore. How am

S 2
Eh oh e-oh, eh eh oh e-oh, eh eh oh e-oh, eh eh oh e-oh, Eh eh oh e-oh, eh eh oh e-oh, eh eh oh e-oh, eh eh oh e-oh. How am

A 1
— does it al-most feel like no-thing changed at all. And if you close your eyes, — does it al-most feel like you've been here be-fore.

A 2
— does it al-most feel like no-thing changed at all. And if you close your eyes, — does it al-most feel like you've been here be-fore.

Eb

P.C.
D A F#m E D A F#m E

Synth
Synth. Strings (legato)

Gtr.
D5 A5 F#5 E5 D5 A5 F#5 E5
El. Guitar (distortion)

Bass

Dr.

Perc.
Cowbell

Pompeii 5
SSAA Combo Eb

H

58

S 1 clouds roll o - ver the hills bring - ing dark - ness from a - bove. But if you close your eyes, does it al - most feel like no -

S 2 clouds roll o - ver the hills bring - ing dark - hills bring - ing ness from Eh oh e - oh, eh eh oh e - oh, eh

A 1 Ah from a - bove. But if you close your eyes, does it al - most feel like no -

A 2 Ah from a - bove. But if you close your eyes, does it al - most feel like no -

Eb

P.C. D A F#m D A

Synth. Synth. Strings (legato)
Sawtooth (staccato)

Gtr. D5 A5
El. Guitar (distortion)

Bass

Dr.

Perc. Cowbell

65

S 1 - thing changed at all. And if you close your eyes, does it al - most feel like you've been here be - fore. How am I gon - na be an op - ti - mist a - bout

S 2 - eh oh e - oh, eh eh oh e - oh. Eh eh oh e - oh, eh eh oh e - oh, eh eh oh e - oh, eh eh oh e - oh. How am I gon - na be an op - ti - mist a - bout

A 1 - thing changed at all. And if you close your eyes, does it al - most feel like you've been here be - fore. Ah.

A 2 - thing changed at all. And if you close your eyes, does it al - most feel like you've been here be - fore. Ah.

Eb

P.C. F#m E D A F#m E D A

Synth. F#5 E5 D5 A5 F#5 E5 D5 A5

Gtr. F#5 E5 D5 A5 F#5 E5 D5 A5

Bass

Dr.

Perc. Handclap

Pompeii 7
SSAA Combo Eb

J

89

S 1
- ble or our sins? oh were do we be gin? The rub - ble or our sins? But if you close your eyes, does it al -

S 2
love. Grey clouds roll o - ver the hills bring - ing dark - ness from a - bove. Eh oh e - oh, eh

A 1
love. Grey clouds roll o - ver the hills bring - ing dark - ness from a - bove. But if you close your eyes, does it al -

A 2
- ble or our sins? oh were do we be gin? The rub - ble or our sins? But if you close your eyes, does it al -

Eb

P.C.
F#m E sus4 E D A A/g# F#m E D

Synth
Synth. Strings (legato)
Sawtooth (staccato)

Gtr.

Bass

Dr.

Perc.

97

S 1
- most feel like no - thing changed at all. And if you close your eyes, does it al - most feel like you've been here be - fore. Oh, how am

S 2
- eh oh e - oh, eh eh oh e - oh, eh eh oh e - oh. Eh eh oh e - oh, eh eh oh e - oh, eh eh oh e - oh, eh eh oh e - oh. how am

A 1
- most feel like no - thing changed at all. And if you close your eyes, does it al - most feel like you've been here be - fore.

A 2
- most feel like no - thing changed at all. And if you close your eyes, does it al - most feel like you've been here be - fore.

Eb

P.C.
A F#m E D A F#m E

Synth

Gtr.
A5 F#5 E5 D5 A5 F#5 E5

Bass

Dr.

Perc.

D

24

S 1 And the walls kept turn-b-ling down — that we love — Grey clouds roll o-ver the hills — bring-ing dark-ness from a - bove —

S 2 And the walls kept turn-b-ling down — In the ci - ty that we love — Grey clouds roll o - ver the hills — bring-ing dark-ness from a - bove —

A1 Ah — that we love — that we love — Ah — that we love — bove —

A2 Ah — that we love — that we love — Ah — that we love — bove —

1

2

3

4

P.C. E D A F#m E D A F#m E

Synth *Polysynth*

Dr. *(on rim)* *Handclap*

Bass

Chr.

Perc.

42

S 1 I gon-na be an op - ti-mist a-bout ___ this? How am I gon-na be an op - ti-mist a-bout ___ this? Handclap

S 2 I gon-na be an op - ti-mist a-bout ___ this? How am I gon-na be an op - ti-mist a-bout ___ this?

A 1 Ah _____ Ah _____ We were caught up and lost _____ In all _____ of our vi - ces. In your pose _____ as the dust _____

A 2 Ah _____ Ah _____ We were caught up and lost _____ In all _____ of our vi - ces. In your pose _____ as the dust _____

1 _____

2 _____

3 _____

4 _____

P.C. D A E D A E D A F#m E D A

Synth Warm pad (legato) Sawtooth (non-legato) El. Guitar (distortion muted)

Dr. Handclap

Bass

Chr. D5 A5 E5 N.C. D5 A5 E5 N.C.

Perc. Handclap

Pompeii 9
SSAA 4 extra staves

80

S 1
The rub - ble or - our sins? - oh - were do we - be - gin? -

S 2
Oh, oh - were do we - be - gin? - And the walls kept turn - b - ling down - In the city that we love - Grey clouds roll o - ver the -

A 1
The rub - ble or - our sins? - Oh - were do we - be - gin? - And the walls kept turn - b - ling down - In the city that we love - Grey clouds roll o - ver the -

A 2
The rub - ble or - our sins? - Oh - were do we - be - gin? - The rub - ble or - our sins? - oh - were do we - be - gin? - The rub - ble or - our sins? - oh - were do we - be - gin? -

1
2
3
4

P.C.
A A/g# F#m E sus4 E D A A/g# F#m E sus4 E D A A/g# F#m E sus4 E D

Synth
8

Ch.
8

Bass

Dr.

Perc.

Pompeii 11
SS/AA 4 extra staves

102

S 1 — been here be-fore — Oh — how am I gon-na be an op - ti-mist a-bout — this? How am I gon-na be an op - ti-mist a-bout — this? If you close your eyes, — does it al - most feel — like no -

S 2 — eh oh e - oh, eh — eh oh e - oh, how am I gon-na be an op - ti-mist a-bout — this? How am I gon-na be an op - ti-mist a-bout — this? If you close your eyes, — e - oh, eh — eh oh e - oh, eh

A1 — been here be-fore — Ah — Ah — Ah — If you close your eyes, — does it al - most feel like no -

A2 — been here be-fore — Ah — Ah — If you close your eyes, — does it al - most feel like no -

1
2
3
4

P.C. F#m E D A E D A E D A E D A

Synth F#5 E5 D5 A5 E5 N.C. D5 A5 E5 N.C. D5 A5

Dr. Handclap

Bass

Clar. 8

Perc. Combell

Pompeii

- Bastille -

Words and Music by Dan Smith
Arranged by Hans Reintjes
Original Key A major

Pop/Rock ♩ = 128

A

Soprano 1

Soprano 2

Alto 1

Alto 2

Piano Combo

Guitar

Bass Guitar

Drums

Percussion

No synth, or guitar play small notes

El. Guitar (distortion muted)

8th

B

S 1

S 2

A 1

A 2

P.C.

Gtr.

Bass

Dr.

Perc.

E D A F#m E D A

Eh__eh oh e-oh, eh__eh oh e-oh, eh__eh oh e-oh, eh__eh oh e-oh. Eh__eh oh e-oh, eh__eh oh e-oh, eh

Eh__eh oh e-oh, eh__eh oh e-oh, eh__eh oh e-oh, eh__eh oh e-oh. Eh__eh oh e-oh, eh__eh oh e-oh, eh

Eh__eh oh e-oh, eh__eh oh e-oh, eh__eh oh e-oh, eh__eh oh e-oh. Eh__eh oh e-oh, eh__eh oh e-oh, eh

Eh__eh oh e-oh, eh__eh oh e-oh, eh__eh oh e-oh, eh__eh oh e-oh. Eh__eh oh e-oh, eh__eh oh e-oh, eh

27

S 1
love. _____ Grey clouds roll o-ver the hills___ bring-ing dark-ness from a - bove. _____

S 2
love. _____ Grey clouds roll o-ver the hills___ bring-ing dark-ness from a - bove. _____

A 1
love. _____ Ah _____ bove. _____

A 2
love. _____ Ah _____ bove. _____

P.C.
F#m E D A F#m E

Gtr.
Bass
Dr.
Perc.

E

33

S 1
But if you close your eyes, _____ does it al - most feel like no - thing changed at all. _____ And if you close your eyes, _____ does it al -

S 2
Eh oh e - oh, eh _____ eh oh e - oh, eh _____ eh oh e - oh, eh _____ eh oh e - oh, eh _____

A 1
But if you close your eyes, _____ does it al - most feel like no - thing changed at all. _____ And if you close your eyes, _____ does it al -

A 2
But if you close your eyes, _____ does it al - most feel like no - thing changed at all. _____ And if you close your eyes, _____ does it al -

P.C.
D A F#m E D

Gtr.
El. Guitar (distortion) D5 A5 F#5 E5 D5

Bass
Dr.
Perc.
Cowbell

G

50 *Handclap*

S 1 And the walls kept tum-b-ling down — that we

S 2 And the walls kept tum-b-ling down — in the ci - ty that we

A 1 In your pose as the dust set - tled a - round us. Ah that we

A 2 In your pose as the dust set - tled a - round us. Ah that we

P.C. D A F#m E D A

Gr. *El. Guitar (distortion muted)*

Bass

Dr.

Perc.

56

S 1 love. Grey clouds roll o - ver the hills bring - ing dark - ness from a - bove.

S 2 love. Grey clouds roll o - ver the hills bring - ing dark - hills bring - ing ness from

A 1 love. Ah from a - bove.

A 2 love. Ah from a - bove.

P.C. F#m E D A F#m

Gr.

Bass

Dr.

Perc. *Cowbell*

72

S 1
_ this? How am I gon-na be an op - ti-mist a-bout__ this? _____ Eh oh e - oh, eh__ eh oh e - oh, eh__ eh oh e - oh, eh

S 2
_ this? How am I gon-na be an op - ti-mist a-bout__ this? _____ Eh oh e - oh, eh__ eh oh e - oh, eh__ eh oh e - oh, eh

A 1
Ah. _____ Eh oh e - oh, eh__ eh oh e - oh, eh__ eh oh e - oh, eh

A 2
Ah. _____ Eh oh e - oh, eh__ eh oh e - oh, eh__ eh oh e - oh, eh

P.C.
E D A E D A F#m

Gtr.
E5 N.C. D5 A5 E5 N.C. D5 A5 F#5

Bass

Dr.

Perc.
Cowbell

I

78

S 1
_ eh oh e - oh. Oh were do we__ be - gin? _____ Oh, oh__ were do we__ be - gin? _____ The rub -

S 2
_ eh oh e - oh. Oh were do we__ be - gin? _____ Oh, oh__ were do we__ be - gin? _____ The rub -

A 1
_ eh oh e - oh. The rub - ble or__ our sins? _____ Oh__ were do we__ be - gin? _____ The rub -

A 2
_ eh oh e - oh. The rub - ble or__ our sins? _____ Oh__ were do we__ be - gin? _____ The rub -

P.C.
E D A A/g# F#m E sus4 E D A A/g#

Gtr.
E5

Bass

Dr.

Perc.

J

96

S 1
— does it al - most feel like no - thing changed at all. — And if you close your eyes, — does it al - most feel like you've

S 2
Eh oh e - oh, eh — eh oh e - oh, eh — eh oh e - oh, eh — eh oh e - oh. Eh — eh oh e - oh, eh — eh oh e - oh, eh —

A 1
— does it al - most feel like no - thing changed at all. — And if you close your eyes, — does it al - most feel like you've

A 2
— does it al - most feel like no - thing changed at all. — And if you close your eyes, — does it al - most feel like you've

P.C.
D A F#m E D A

Gtr.
D5 A5 F#5 E5 D5 A5

Bass

Dr.

Perc.

102

S 1
— been here be - fore. — Oh, — how am I gon - na be an op - ti - mist a - bout — this? How am I gon - na be an op - ti - mist a - bout

S 2
— eh oh e - oh, eh — eh oh e - oh. how am I gon - na be an op - ti - mist a - bout — this? How am I gon - na be an op - ti - mist a - bout

A 1
— been here be - fore. — Ah. — Ah. —

A 2
— been here be - fore. — Ah. — Ah. —

P.C.
F#m E D A E D A

Gtr.
F#5 E5 D5 A5 E5 N.C. D5 A5

Bass

Dr.

Perc.
Handclap

SSAA small Combo extra staves

Pompeii

- Bastille -

*Words and Music by Dan Smith
Arranged by Hans Reinjes
Original Key A major*

Pop/Rock 4/4 = 128

A

B

Soprano 1
Soprano 2
Alto 1
Alto 2

No vocal or guitar parts small notes

(vocals)

(Guitar distortion muted)

8th

Piano Combo
Guitar
Bass Guitar
Drums
Percussion

D A F#m E D A F#m E D A F#m

Eh — eh oh e - oh, eh — eh oh e - oh, eh — eh oh e - oh, eh — eh oh e - oh, eh — eh oh e - oh, eh — eh oh e - oh, eh — eh oh e - oh, eh — eh oh e - oh, eh — eh oh e - oh, eh — eh oh

Pompeii 3
SSAA small Combo extra staves

D

21

S 1
And the walls kept tum-b-ling down —
that we love. —
Grey

S 2
And the walls kept tum-b-ling down —
In the ci - ty that we love. —
Grey

A 1
Ma-ry days — fell a - way — with no - thing to show. —
Ah — that we love. —

A 2
Ma-ry days — fell a - way — with no - thing to show. —
Ah — that we love. —

1
2

2
1

PC:
D A F#m E D A F#m E

Gtr.
8

Bass

Dr.
(on rim)

Perc.
Handclap

36

S 1 - thing changed at all. And if you close your eyes, _____ does it al - most feel like you've _____ been here be-fore. _____ How am I gon-na be an op - ti-mist a-bout

S 2 - eh oh e - oh, eh _____ eh oh e - oh. Eh _____ eh oh e - oh, eh _____ eh oh e - oh, eh _____ eh oh e - oh. How am I gon-na be an op - ti-mist a-bout

A 1 - thing changed at all. And if you close your eyes, _____ does it al - most feel like you've _____ been here be-fore. _____ Ah _____

A 2 - thing changed at all. And if you close your eyes, _____ does it al - most feel like you've _____ been here be-fore. _____ Ah _____

1

2

PC: F#m E D A F#m E D A

Gtr. F#5 E5 D5 A5 F#5 E5 D5 A5

Bass

Dr.

Perc.

Handclap

Pompeii 7
SSAA small Combo extra staves

G

5/1

S 1
And the walls kept turn - b - ling down _____
that we love _____
Grey

S 2
And the walls kept turn - b - ling down _____
In the ci - ty that we love _____
Grey

A 1
as the dust _____ set - tled _____ a - round _____ us _____
Ah _____
that we love _____

A 2
as the dust _____ set - tled _____ a - round _____ us _____
Ah _____
that we love _____

1
2

P.C.
A F#m E D A F#m E

Gtr.
8

Bass

Dr.

Perc.

Pompeii 11
SSAA small Combo extra staves

80

S 1
Oh, oh were do we be - gin? The rub - ble or our sins? oh were do we be - gin? The rub -

S 2
Oh, oh were do we be - gin? The rub - ble or our sins? And the walls kept turn - b - ling down in the ci - ty that we

A 1
The rub - ble or our sins? Oh were do we be - gin? The rub - ble or our sins? And the walls kept turn - b - ling down in the ci - ty that we

A 2
The rub - ble or our sins? Oh were do we be - gin? The rub - ble or our sins? oh were do we be - gin? The rub -

1
2

PC: A A/g# F#m E sus4 E D A A/g# F#m E sus4 E D A A/g#

Gtr.
Bass
Dr.
Perc.

97

S 1 - most feel like no - thing changed at all. And if you close your eyes, does it al - most feel like you've been here be-fore. Oh, how am

S 2 - eh oh e - oh, eh oh e - oh, eh oh e - oh, Eh eh oh e - oh, eh oh e - oh, eh oh e - oh, eh oh e - oh, how am

A 1 - most feel like no - thing changed at all. And if you close your eyes, does it al - most feel like you've been here be-fore.

A 2 - most feel like no - thing changed at all. And if you close your eyes, does it al - most feel like you've been here be-fore.

1

2

PC: A F#m E D A F#m E

Gtr: A5 F#5 E5 D5 A5 F#5 E5

Bass

Dr.

Perc.



SSAA Piano Solo Advanced

Pompeii

- Bastille -

Words and Music by Dan Smith
Arranged by Hans Reintjes
Original Key A major

Pop/Rock ♩ = 128

A

Soprano 1

Soprano 2

Alto 1

Alto 2

Piano Solo
Advanced

D A A/g# F#m E^{sus4} E D A A/g# F#m E

© www.ChorusOnline.com / 0031 (0) 6 - 41 57 77 56

D

20

S 1
And the walls kept tum-b-ling down

S 2
And the walls kept tum-b-ling down

A 1
ces. Ma-ny days fell a-way with no-thing to show. Ah

A 2
ces. Ma-ny days fell a-way with no-thing to show. Ah

E D A F#m E D

P.S.A.

26

S 1
that we love. Grey clouds roll o-ver the hills bring-ing dark-ness from a-bove.

S 2
in the ci-ty that we love. Grey clouds roll o-ver the hills bring-ing dark-ness from a-bove.

A 1
that we love. Ah bove.

A 2
that we love. Ah bove.

A F#m E D A F#m

P.S.A.

40

S 1
— been here be-fore. How am I gon-na be an op - ti-mist a-bout this? How am

S 2
— eh oh e - oh, eh — eh oh e - oh. How am I gon-na be an op - ti-mist a-bout this? How am

A 1
— been here be-fore. Ah.

A 2
— been here be-fore. Ah.

F#m E D A E

P.S.A.

44

S 1
I gon-na be an op - ti-mist a-bout this?

S 2
I gon-na be an op - ti-mist a-bout this?

A 1
Ah. We were caught up and lost in all

A 2
Ah. We were caught up and lost in all

D A E D A

P.S.A.

F

H

59

S 1 hills bring-ing dark-ness from a - bove. But if you close your eyes, does it al -

S 2 hills bring-ing dark - hills bring - ing ness from Eh oh e - oh, eh

A 1 from a - bove. But if you close your eyes, does it al -

A 2 from a - bove. But if you close your eyes, does it al -

A F#m D

P.S.A.

64

S 1 - most feel like no - thing changed at all. And if you close your eyes, does it al -

S 2 eh oh e - oh, eh eh oh e - oh, eh eh oh e - oh. Eh eh oh e - oh, eh

A 1 - most feel like no - thing changed at all. And if you close your eyes, does it al -

A 2 - most feel like no - thing changed at all. And if you close your eyes, does it al -

A A F#m E D

P.S.A.

I

76

S 1
— eh oh e - oh, eh — eh oh e - oh, eh — eh oh e - oh. Oh were do we — be - gin? —

S 2
— eh oh e - oh, eh — eh oh e - oh, eh — eh oh e - oh. Oh were do we — be - gin? —

A 1
— eh oh e - oh, eh — eh oh e - oh, eh — eh oh e - oh. The rub -

A 2
— eh oh e - oh, eh — eh oh e - oh, eh — eh oh e - oh. The rub -

A F#m E D A A/g#

P.S.A.

81

S 1
Oh, oh — were do we — be - gin? — The rub - ble or — our sins? — oh

S 2
Oh, oh — were do we — be - gin? — The rub - ble or — our sins? — And the

A 1
- ble or — our sins? — Oh — were do we — be - gin? — The rub - ble or — our sins? — And the

A 2
- ble or — our sins? — Oh — were do we — be - gin? — The rub - ble or — our sins? — oh

F#m E sus4 E D A A/g# F#m E sus4 E

P.S.A.

J

95

S 1
But if you close your eyes, — does it al - most feel like no - thing changed at all.

S 2
Eh oh e - oh, eh — eh oh e - oh, eh — eh oh e - oh, eh

A 1
But if you close your eyes, — does it al - most feel like no - thing changed at all.

A 2
But if you close your eyes, — does it al - most feel like no - thing changed at all.

P.S.A.
D A F#m

99

S 1
— And if you close your eyes, — does it al - most feel like you've — been here be - fore.

S 2
— eh oh e - oh. Eh — eh oh e - oh, eh — eh oh e - oh, eh — eh oh e - oh, eh —

A 1
— And if you close your eyes, — does it al - most feel like you've — been here be - fore.

A 2
— And if you close your eyes, — does it al - most feel like you've — been here be - fore.

P.S.A.
E D A F#m

Pompeii

- Bastille -

Words and Music by Dan Smith
Arranged by Hans Reintjes
Original Key A major

Pop/Rock ♩ = 128

A

Soprano 1

Soprano 2

Alto 1

Alto 2

Piano Solo Intermediate

D A A/g# F#^m E^{sus4} E D A A/g# F#^m E^{sus4} E

B

S 1

S 2

A 1

A 2

P.S.I.

eh oh e-oh, eh eh oh e-oh, eh eh oh e-oh, eh eh oh e-oh, Eh eh oh e-oh, eh eh oh e-oh, eh

D A A/g# F#^m E^{sus4} E D A A/g#

28

S 1
Grey clouds roll o - ver the hills — bring - ing dark - ness from a - bove.

S 2
Grey clouds roll o - ver the hills — bring - ing dark - ness from a - bove.

A 1
Ah — bove.

A 2
Ah — bove.

E D A F^{#m} E

P.S.I.

33

S 1
But if you close your eyes, — does it al - most feel like no - thing changed at all. — And if you close your eyes,

S 2
Eh oh e - oh, eh — eh oh e - oh, eh — eh oh e - oh, eh — eh oh e - oh. Eh —

A 1
But if you close your eyes, — does it al - most feel like no - thing changed at all. — And if you close your eyes,

A 2
But if you close your eyes, — does it al - most feel like no - thing changed at all. — And if you close your eyes,

D A F^{#m} E

P.S.I.

F

46 *Handclap*

S 1

S 2

A 1
We were caught up and lost in all of our vi - ces. In your pose as the dust

A 2
We were caught up and lost in all of our vi - ces. In your pose as the dust

D A F#m E D A

P.S.I.

G

52

S 1
And the walls kept tum-b-ling down that we love. Grey

S 2
And the walls kept tum-b-ling down in the ci - ty that we love. Grey

A 1
set - tled a - round us. Ah that we love.

A 2
set - tled a - round us. Ah that we love.

F#m E D A F#m E

P.S.I.

68

S 1
- most feel like you've been here be-fore. How am I gon-na be an op-ti-mist a-bout

S 2
eh oh e-oh, eh eh oh e-oh, eh eh oh e-oh. How am I gon-na be an op-ti-mist a-bout

A 1
- most feel like you've been here be-fore. Ah.

A 2
- most feel like you've been here be-fore. Ah.

A F#m E D A

P.S.I.

72

S 1
this? How am I gon-na be an op-ti-mist a-bout this? Eh oh e-oh, eh eh oh e-oh, eh

S 2
this? How am I gon-na be an op-ti-mist a-bout this? Eh oh e-oh, eh eh oh e-oh, eh

A 1
Ah. Eh oh e-oh, eh eh oh e-oh, eh

A 2
Ah. Eh oh e-oh, eh eh oh e-oh, eh

E D A E D A

P.S.I.

89

S 1
- ble or our sins? oh were do we be gin? The rub - ble or our sins?

S 2
love. Grey clouds roll o-ver the hills bring-ing dark-ness from a - bove.

A 1
love. Grey clouds roll o-ver the hills bring-ing dark-ness from a - bove.

A 2
- ble or our sins? oh were do we be gin? The rub - ble or our sins?

F#m E sus4 E D A A/g# F#m

P.S.I.

J

94

S 1
But if you close your eyes, does it al - most feel like no - thing changed at all.

S 2
Eh oh e - oh, eh eh oh e - oh, eh eh oh e - oh, eh

A 1
But if you close your eyes, does it al - most feel like no - thing changed at all.

A 2
But if you close your eyes, does it al - most feel like no - thing changed at all.

E D A F#m

P.S.I.

K

108

S 1
— does it al - most feel like no - thing changed at all? — Eh — eh oh e - oh, eh — eh oh e - oh, eh

S 2
— e - oh, eh — eh oh e - oh, eh — eh oh e - oh, eh Eh — eh oh e - oh, eh — eh oh e - oh, eh

A 1
— does it al - most feel like no - thing changed at all. — Eh — eh oh e - oh, eh — eh oh e - oh, eh

A 2
— does it al - most feel like no - thing changed at all? — Eh — eh oh e - oh, eh — eh oh e - oh, eh

D A F#m E D A A/g#

P.S.I.

114

S 1
— eh oh e - oh, eh — eh oh e - oh. Eh — eh oh e - oh, eh — eh oh e - oh, eh — eh oh e - oh.

S 2
— eh oh e - oh, eh — eh oh e - oh. Eh — eh oh e - oh, eh — eh oh e - oh, eh — eh oh e - oh.

A 1
— eh oh e - oh, eh — eh oh e - oh. Eh — eh oh e - oh, eh — eh oh e - oh, eh — eh oh e - oh.

A 2
— eh oh e - oh, eh — eh oh e - oh. Eh — eh oh e - oh, eh — eh oh e - oh, eh — eh oh e - oh.

F#m E sus4 E D A A/g# F#m E sus4

P.S.I.

Pompeii

- Bastille -

*Words and Music by Dan Smith
Arranged by Hans Reintjes
Original Key A major*

Pop/Rock ♩ = 128

A

B

Soprano 1
Soprano 2
Alto 1
Alto 2

Eh ___ eh oh e-oh, eh ___ eh oh e-oh, eh ___ eh oh e-oh, eh
Eh ___ eh oh e-oh, eh ___ eh oh e-oh, eh ___ eh oh e-oh, eh
Eh ___ eh oh e-oh, eh ___ eh oh e-oh, eh ___ eh oh e-oh, eh
Eh ___ eh oh e-oh, eh ___ eh oh e-oh, eh ___ eh oh e-oh, eh

S 1
S 2
A 1
A 2

12

___ eh oh e-oh. Eh ___ eh oh e-oh, eh ___ eh oh e-oh, eh ___ eh oh e-oh, eh ___ eh oh e-oh.
___ eh oh e-oh. Eh ___ eh oh e-oh, eh ___ eh oh e-oh, eh ___ eh oh e-oh, eh ___ eh oh e-oh.
___ eh oh e-oh. Eh ___ eh oh e-oh, eh ___ eh oh e-oh, eh ___ eh oh e-oh, eh ___ eh oh e-oh.
___ eh oh e-oh. Eh ___ eh oh e-oh, eh ___ eh oh e-oh, eh ___ eh oh e-oh, eh ___ eh oh e-oh.

E

32

S 1
— But if you close your eyes, — does it al - most feel like no -

S 2
— Eh oh e - oh, eh — eh oh e - oh, eh

A 1
— But if you close your eyes, — does it al - most feel like no -

A 2
— But if you close your eyes, — does it al - most feel like no -

36

S 1
- - thing changed at all. — And if you close your eyes, — does it al -

S 2
— eh oh e - oh, eh — eh oh e - oh. Eh — eh oh e - oh, eh

A 1
- - thing changed at all. — And if you close your eyes, — does it al -

A 2
- - thing changed at all. — And if you close your eyes, — does it al -

39

S 1
- most feel — like you've — been here be - fore. — How am

S 2
— eh oh e - oh, eh — eh oh e - oh, eh — eh oh e - oh. How am

A 1
- most feel like you've — been here be - fore. —

A 2
- most feel — like you've — been here be - fore. —

G

54

S 1
walls kept tum - b - ling down _____ that we love. _____ Grey

S 2
walls kept tum - b - ling down _____ in the ci - ty that we love. _____ Grey

A 1
Ah _____ that we love. _____

A 2
Ah _____ that we love. _____

58

S 1
clouds roll o - ver the _____ hills bring - ing dark - ness from a - bove. _____

S 2
clouds roll o - ver the _____ hills bring - ing dark - hills bring - ing ness from _____

A 1
Ah _____ from a - bove. _____

A 2
Ah _____ from a - bove. _____

H

62

S 1
But if you close your eyes, _____ does it al - most feel like no - thing changed at all.

S 2
Eh oh e - oh, eh _____ eh oh e - oh, eh _____ eh oh e - oh, eh

A 1
But if you close your eyes, _____ does it al - most feel like no - thing changed at all.

A 2
But if you close your eyes, _____ does it al - most feel like no - thing changed at all.

I

76

S 1
— eh oh e-oh, eh — eh oh e-oh, eh — eh oh e-oh. Oh were do we — be - gin?

S 2
— eh oh e-oh, eh — eh oh e-oh, eh — eh oh e-oh. Oh were do we — be - gin?

A 1
— eh oh e-oh, eh — eh oh e-oh, eh — eh oh e-oh.

A 2
— eh oh e-oh, eh — eh oh e-oh, eh — eh oh e-oh.

80

S 1
— Oh, oh — were do we — be - gin? — The rub -

S 2
— Oh, oh — were do we — be - gin? — The rub -

A 1
The rub - ble or — our sins? — Oh — were do we — be - gin? — The rub -

A 2
The rub - ble or — our sins? — Oh — were do we — be - gin? — The rub -

85

S 1
- ble or — our sins? — oh were do we — be - gin? — The rub -

S 2
- ble or — our sins? — And the walls kept tum-b-ling down — in the ci - ty that we

A 1
- ble or — our sins? — And the walls kept tum-b-ling down — in the ci - ty that we

A 2
- ble or — our sins? — oh were do we — be - gin? — The rub -

101

S 1
- most feel like you've been here be - fore. Oh, how am

S 2
eh oh e - oh, eh eh oh e - oh, eh eh oh e - oh. how am

A 1
- most feel like you've been here be - fore.

A 2
- most feel like you've been here be - fore.

104

S 1
I gon-na be an op - ti-mist a-bout this? How am I gon-na be an op - ti-mist a-bout

S 2
I gon-na be an op - ti-mist a-bout this? How am I gon-na be an op - ti-mist a-bout

A 1
Ah.

A 2
Ah.

K

107

S 1
this? If you close your eyes, does it al - most feel like no -

S 2
this? If you close your eyes, e - oh, eh eh oh e - oh, eh

A 1
If you close your eyes, does it al - most feel like no -

A 2
If you close your eyes, does it al - most feel like no -

Pompeii

- Bastille -

Words and Music by Dan Smith
Arranged by Hans Reintjes
Original Key A major

Pop/Rock ♩ = 128

A **B** **C** **D**

C Instr.

28

E

34

39

F **G**

45

58

H

65

70

75

Pompeii

- Bastille -

Words and Music by Dan Smith
Arranged by Hans Reintjes
Original Key A major

Pop/Rock ♩ = 128

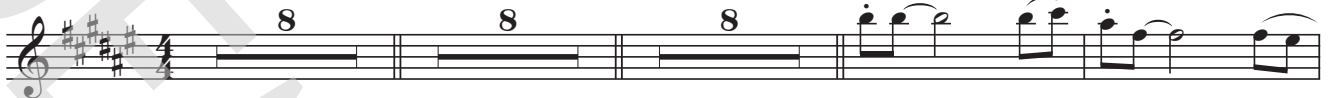
A

B

C

D

Eb Instr.



E

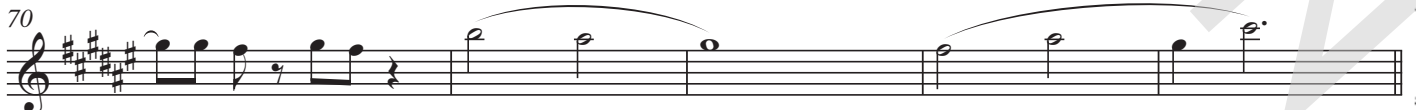


F

G



H



Pompeii

- Bastille -

Words and Music by Dan Smith
Arranged by Hans Reintjes
Original Key A major

Pop/Rock ♩ = 128

A

D A F#m E D

No synth. or guitar play small notes

(staccato)

B

A F#m E D A

11 F#m E D A F#m

C

16 E D A F#m E D A F#m E

D

25 D A F#m E D A F#m

Pompeii

- Bastille -

Words and Music by Dan Smith
Arranged by Hans Reintjes
Original Key A major

Pop/Rock ♩ = 128

A

D A A/g# F#m E^{sus4} E D A A/g# F#m E

Musical notation for section A, measures 1-8. Treble and bass clefs with chords and a bass line.

B

9 D A F#m E^{sus4} E D

Musical notation for section B, measures 9-13. Treble and bass clefs with chords and a staccato bass line.

(staccato)

C

14 A F#m E^{sus4} E D A F#m

Musical notation for section C, measures 14-19. Treble and bass clefs with chords and a bass line.

D

20 E D A F#m E D

Musical notation for section D, measures 20-25. Treble and bass clefs with chords and a bass line.

26 A F#m E D A F#m

Musical notation for section D, measures 26-31. Treble and bass clefs with chords and a bass line.

Pompeii

- Bastille -

Words and Music by Dan Smith
Arranged by Hans Reintjes
Original Key A major

Pop/Rock ♩ = 128

A

D A A/g# F#m E^{sus4} E D A A/g# F#m E^{sus4} E

B

9 D A A/g# F#m E^{sus4} E D A A/g# F#m E^{sus4} E

C

17 D A F#m E D A

D

23 F#m E D A F#m E

29

D A F#m E

Pompeii

- Bastille -

Words and Music by Dan Smith
Arranged by Hans Reintjes
Original Key A major

Pop/Rock ♩ = 128

A

Warm pad (legato)

Sawtooth (staccato)

B

5

10

C

15

20

Pompeii

- Bastille -

Words and Music by Dan Smith
Arranged by Hans Reintjes
Original Key A major

Pop/Rock ♩ = 128

A

El. Guitar (distortion muted)

8^{vb}

Guitar



B



C



D



E

D5

A5



El. Guitar (distortion)

Pompeii

- Bastille -

Words and Music by Dan Smith
Arranged by Hans Reintjes
Original Key A major

Pop/Rock ♩ = 128

Bass Guitar

8 8

21

27

32

38

44

49

Drumkit/Percussion

High Tom
Hi-Hat closed
Hi-Hat open
Mid Tom
Low Tom
Ride Cymbal
Crash Cymbal
Shareclick
Bassdrum (Kick)
Snaredrum
Hi-Hat Foot
Floor Tom
Ride Bell/Cup
Splash Cymbal
Triangle mute
Tambourine Beating
Triangle open

- Shaker (eggs)
- Claves
- High Timbale
- Sleigh Bells
- Bell Tree
- Maracas
- Wind Chimes

Handclap
Guero
Woodblock High
Timbale Low
Agogo High
Cowbell
Conga Cabasa
Woodblock Low
Agogo Low

Pompeii

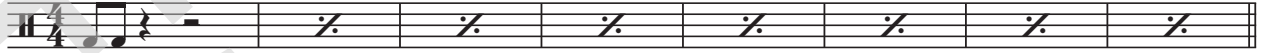
- Bastille -

Words and Music by Dan Smith
Arranged by Hans Reintjes
Original Key A major

Pop/Rock ♩ = 128

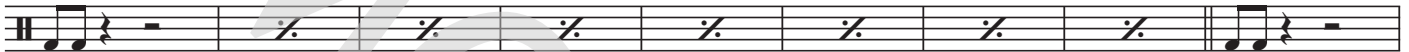
A

Drums



B

9



C

18



D

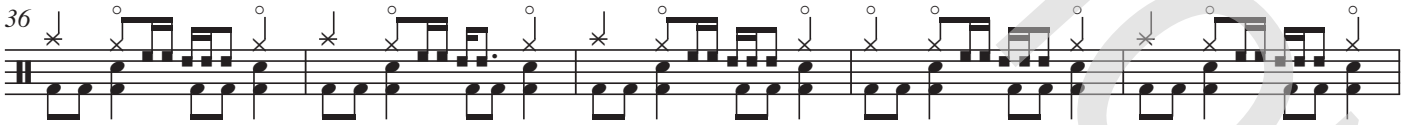
26



31



36



41



F

46



G

Drumkit/Percussion

High Tom
Hi-Hat closed
Hi-Hat open
Mid Tom
Low Tom
Ride Cymbal
Crash Cymbal
Shareclick
Bassdrum (Kick)
Snaredrum
Hi-Hat Foot
Floor Tom
Ride Bell/Cup
Splash Cymbal
Triangle mute
Tambourine Beating
Triangle open

- Shaker (eggs)
- Claves
- High Timbale
- Sleigh Bells
- Bell Tree
- Maracas
- Wind Chimes

Handclap
Guero
Woodblock High
Timbale Low
Agogo High
Cowbell
Conga Cabasa
Woodblock Low
Agogo Low

Pompeii

- Bastille -

Words and Music by Dan Smith
Arranged by Hans Reintjes
Original Key A major

Pop/Rock ♩ = 128

A

B

C

D

Percussion

8 8 8 Handclap

28

E

34 Cowbell

F

41

Handclap

G

51

58 Cowbell

H

63

Pompeii

- Bastille -

Words and Music by Dan Smith
Arranged by Hans Reintjes
Original Key A major

Pop/Rock ♩ = 128

A

D A F#m E D A

B

7 F#m E D A F#m

Eh__ eh oh e-oh, eh__ eh oh e-oh, eh__ eh oh e-oh, eh

12 E D A F#m E

__ eh oh e-oh. Eh__ eh oh e-oh, eh__ eh oh e-oh, eh__ eh oh e-oh, eh__ eh oh e-oh.

C

17 D A F#m E D A

I was left to my own de-vi - i - i - i - ces. Ma-ny days__ fell a - way with

D

23 F#m E D A F#m

no - thing to show.____ And the walls kept tum-b-ling down__ in the ci-ty that we love.____

28 E D A F#m E

__ Grey clouds roll o-ver the hills__ bring-ing dark-ness from a - bove.____



Lyrics

Pompeii

- Bastille -

*Words and Music by Dan Smith
Arranged by Hans Reintjes
Original Key A major*

A: Intro

B
Eh eh oh eh oh. 8x

C
I was left to my own devices.
Many days fell away with nothing to show.

D
And the walls kept tumbling down in the city that we love.
Grey clouds roll over the hills bringing darkness from above.

E
But if you close your eyes, does it almost feel like nothing changed at all?
And if you close your eyes, does it almost feel like you've been here before?
How am I gonna be an optimist about this? 2x

F
We were caught up and lost in all of our vices.
In your pose as the dust settled around us.

G
And the walls kept tumbling down in the city that we love.
Grey clouds roll over the hills bringing darkness from above.

H
But if you close your eyes, does it almost feel like nothing changed at all?
And if you close your eyes, does it almost feel like you've been here before?
How am I gonna be an optimist about this? 2x
Eh eh oh eoh. 4x

I
Oh where do we begin? The rubble or our sins? 2x
And the walls kept tumbling down in the city that we love.
Grey clouds roll over the hills bringing darkness from above.

J
But if you close your eyes, does it almost feel like nothing changed at all?
And if you close your eyes, does it almost feel like you've been here before?
How am I gonna be an optimist about this? 2x

K
If you close your eyes, does it almost feel like nothing changed at all?
Eh oh eh oh. 8x