



Can't feel my face - SATB

Pag.

02	Full score combo C instrument
14	Full score combo Bb instrument
26	Full score combo Eb instrument
38	Full score combo 4 extra staves
57	Full score small combo
76	Full score small combo 2 extra staves
95	Full score vocals (SATB) Piano Solo Advanced
111	Full score vocals (SATB) Piano Solo Intermediate
127	Vocals (SATB)
147	C instrument
149	Bb instrument
151	Eb instrument
153	Piano Solo Advanced
159	Piano Solo Intermediate
165	Piano Combo
171	Synthesizer
175	Guitar
177	Bassguitar
180	Drumkit
184	Percussion
188	Leadsheet (melody, lyrics, chords)
193	Empty paper
199	Lyrics

The index numbers above are based on the original (complete) PDF-file.
In this smaller DEMO-version, the numbers above do NOT match this file !



01 SATB Combo C

Can't feel my face

- The Weeknd -

Words and Music by Ali Payami, Savan Kotecha,
Max Martin, Abel Tesfaye, Peter Svensson
Arranged by Hans Reintjes
Original Key A minor

DEMO

DEMO

$\text{♩} = 108$
Intro

Soprano
Doo doo doo doo doo doo

Alto
Doo doo doo doo doo doo

Tenor
Doo doo doo doo doo doo And I know

Bass
Doo doo doo doo doo doo

C Instr.
G Polysynth F A^m

Piano Combo

Synthesizer
Saw wave Saw wave

Guitar

Bass Guitar

Drum Set

Percussion

© www.ChorusOnline.com / 0031 (0) 6 - 41 57 77 56

Can't feel my face 3

01 SATB Combo C

Pre-Chorus 1

25

S
wor - ry a - bout it. She told me don't wor - ry no more. We both know we

A
Finger snap

T
Finger snap

B
wor - ry a - bout it. She told me don't wor - ry no more. We both know we

C
G F A^m

P.C.

Synth
Warm pad

Gtr.
Square wave

Bass

D.S.
(Finger snap)

Perc.
(Finger snap)

33

S
can't go with - out it. She told me you'll nev - er be a - lone oh oh ooh.

A
ooh.

T
ooh.

B
can't go with - out it. She told me you'll nev - er be a - lone oh oh ooh.

C
G F A^m

P.C.

Synth
Seashore

Gtr.

Bass

D.S.
x

Perc.

© www.ChorusOnline.com / 0031 (0) 6 - 41 57 77 56

Can't feel my face 5

01 SATB Combo C

Verse 2

57

S she'll be the death of me at least we'll both be numb. And she'll always get the best of me the worst is yet to come. All the mis-

A she'll be the death of me at least we'll both be numb. And she'll always get the best of me the worst is yet to come. All the mis-

T at least we'll both be numb. the worst is yet to come. All the mis-

B at least we'll both be numb. the worst is yet to come. All the mis-

C G F A^m

P.C.

Synth

Gr. *El. Guitar (Wah-wah)*

Bass

D.S.

Perc.

65

S - er - y was nec - es - sar - ry when we're deep in love. This I know. Girl. She told me don't

A - er - y was nec - es - sar - ry when we're deep in love. This I know. Girl. She told me don't

T - er - y was nec - es - sar - ry when we're deep in love. This I know. Girl I know. She told me don't

B - er - y was nec - es - sar - ry when we're deep in love. This I know. Girl I know. She told me don't

C G F A^m

P.C.

Synth

Gr.

Bass

D.S.

Perc.

© www.ChorusOnline.com / 0031 (0) 6 - 41 57 77 56



Can't feel my face 7

01 SATB Combo C

Chorus 2

89 Handclap

S
A
T
B
C
P.C.
Synth
Gtr.
Bass
D.S.
Perc.

but I love it but I love it.

I can't feel my face when I'm with you but I love it but I love it, oh.

G F A^m

97 Handclap

S
A
T
B
C
P.C.
Synth
Gtr.
Bass
D.S.
Perc.

I can't feel my face but I love it. I can't feel my face

I can't feel my face when I'm with you but I love it but I love it, oh.

G F A^m

Warm Pad

© www.ChorusOnline.com / 0031 (0) 6 - 41 57 77 56

Can't feel my face 9

01 SATB Combo C

Interlude

121

S Ah. Ooh.

A Ah. Ooh.

T She told me don't

B She told me don't

C G F A^m

P.C.

Synth Saw wave

Gtr. Saw wave

Bass

D.S. Optional

Perc. Bongo's

Pre-Chorus 3

129

S We both know we

A We both know we

T wor - ry a - bout it. She told me don't wor - ry no more.

B wor - ry a - bout it. She told me don't wor - ry no more.

C G F A^m

P.C.

Synth Warm Pad

Gtr. Square wave

Bass

D.S.

Perc.

© www.ChorusOnline.com / 0031 (0) 6 - 41 57 77 56

Can't feel my face 11

01 SATB Combo C

155

S
A
T
B
C
P.C.
Synth
Gtr.
Bass
D.S.
Perc.

Said I ___ can't feel my face but I love ___ it but I love ___ it. I ___ can't feel ___ my face

I can't feel my face when I'm with you ___ but I love ___ it but I love ___ it. Oh. ___

I can't feel my face when I'm with you ___ but I love ___ it ___ girl I love ___ it. ___

G F A^m

Warm Pad

Chorus 5

163

S
A
T
B
C
P.C.
Synth
Gtr.
Bass
D.S.
Perc.

I'm ___ with you ___ but I love ___ it but I love ___ it I ___ can't feel ___ my face

I'm ___ with you ___ but I love ___ it but I love ___ it I ___ can't feel ___ my face

I can't feel my face when I'm with you ___ but I love ___ it but I love ___ it.

I can't feel my face when I'm with you ___ Ahhh. but I love ___ it girl ___ but I love ___ it girl.

G F A^m

Can't feel my face 3

02 SATB Combo Bb

Pre-Chorus 1

25

S
wor - ry a - bout it. She told me don't wor - ry no more. We both know we

A
Finger snap

T
Finger snap

B
wor - ry a - bout it. She told me don't wor - ry no more. We both know we

Bb
G F A^m

P.C.

Synth
Warm pad
Square wave

Gtr.

Bass

D.S.
(Finger snap)

Perc.
(Finger snap)

33

S
can't go with - out it. She told me you'll nev - er be a - lone oh oh ooh.

A
ooh.

T
ooh.

B
can't go with - out it. She told me you'll nev - er be a - lone oh oh ooh.

Bb
G F A^m

P.C.

Synth
Seashore

Gtr.

Bass

D.S.

Perc.

© www.ChorusOnline.com / 0031 (0) 6 - 41 57 77 56

Can't feel my face 5

02 SATB Combo Bb

Verse 2

57

S she'll be the death of me at least we'll both be numb. And she'll always get the best of me the worst is yet to come. All the mis-

A she'll be the death of me at least we'll both be numb. And she'll always get the best of me the worst is yet to come. All the mis-

T at least we'll both be numb. the worst is yet to come. All the mis-

B at least we'll both be numb. the worst is yet to come. All the mis-

Bb G F A^m

P.C.

Synth

Gr. *El. Guitar (Wah-wah)*

Bass

D.S.

Perc.

65

S - er - y was nec - es - sar - ry when we're deep in love. This I know. Girl. She told me don't

A - er - y was nec - es - sar - ry when we're deep in love. This I know. Girl. She told me don't

T - er - y was nec - es - sar - ry when we're deep in love. This I know. Girl I know. She told me don't

B - er - y was nec - es - sar - ry when we're deep in love. This I know. Girl I know. She told me don't

Bb G F A^m

P.C.

Synth

Gr.

Bass

D.S.

Perc.

© www.ChorusOnline.com / 0031 (0) 6 - 41 57 77 56

Can't feel my face 7

02 SATB Combo Bb

Chorus 2

89 Handclap

S: but I love it but I love it.

A: but I love it but I love it.

T: I can't feel my face when I'm with you but I love it but I love it, oh.

B: I can't feel my face when I'm with you but I love it but I love it, oh.

Bb: G F A^m

P.C.

Synth

Gr.

Bass

D.S.

Perc. (Handclap)

97 Handclap

S: I can't feel my face but I love it. I can't feel my face

A: I can't feel my face but I love it. I can't feel my face

T: I can't feel my face when I'm with you but I love it but I love it, oh.

B: I can't feel my face when I'm with you but I love it but I love it, oh.

Bb: G F A^m

P.C.

Synth Warm Pad

Gr.

Bass

D.S.

Perc.

Can't feel my face 9

02 SATB Combo Bb

Interlude

121

S Ah. Ooh.

A Ah. Ooh.

T She told me don't

B She told me don't

Bb G F A^m

P.C.

Synth Saw wave

Gtr. Saw wave

Bass

D.S. Optional

Perc. Bongo's

Pre-Chorus 3

129

S We both know we

A We both know we

T wor - ry a - bout it. She told me don't wor - ry no more.

B wor - ry a - bout it. She told me don't wor - ry no more.

Bb G F A^m

P.C.

Synth Warm Pad

Gtr. Square wave

Bass

D.S.

Perc.

Can't feel my face 11

02 SATB Combo Bb

155

S
A
T
B
Bb
P.C.
Synth
Gtr.
Bass
D.S.
Perc.

Said I can't feel my face but I love it but I love it. I can't feel my face

Said I can't feel my face but I love it but I love it. I can't feel my face

I can't feel my face when I'm with you but I love it but I love it. Oh.

I can't feel my face when I'm with you but I love it girl I love it.

G F A^m

Warm Pad

Chorus 5

163

S
A
T
B
Bb
P.C.
Synth
Gtr.
Bass
D.S.
Perc.

I'm with you but I love it but I love it I can't feel my face

I'm with you but I love it but I love it I can't feel my face

I can't feel my face when I'm with you but I love it but I love it.

I can't feel my face when I'm with you Ahhh. but I love it girl. but I love it girl.

G F A^m

© www.ChorusOnline.com / 0031 (0) 6 - 41 57 77 56





03 SATB Combo Eb

Can't feel my face

- The Weeknd -

Words and Music by Ali Payami, Savan Kotecha,
Max Martin, Abel Tesfaye, Peter Svensson
Arranged by Hans Reintjes
Original Key A minor

DEMO

DEMO

$\text{♩} = 108$
Intro

Soprano
Doo doo doo doo doo

Alto
Doo doo doo doo doo

Tenor
Doo doo doo doo doo And I know

Bass
Doo doo doo doo doo

Eb Instr.
G Polysynth F A^m

Piano Combo

Synthesizer
Saw wave

Guitar
Saw wave

Bass Guitar

Drum Set

Percussion

© www.ChorusOnline.com / 0031 (0) 6 - 41 57 77 56

Can't feel my face 3

03 SATB Combo Eb

Pre-Chorus 1

25

S
wor - ry a - bout it. She told me don't wor - ry no more. We both know we

A
Finger snap

T
Finger snap

B
wor - ry a - bout it. She told me don't wor - ry no more. We both know we

Eb

G F A^m

P.C.

Synth
Warm pad
Square wave

Gtr.

Bass

D. S.
(Finger snap)

Perc.
(Finger snap)

33

S
can't go with - out it. She told me you'll nev - er be a - lone oh oh ooh.

A
ooh.

T
ooh.

B
can't go with - out it. She told me you'll nev - er be a - lone oh oh ooh.

Eb

G F A^m

P.C.

Synth
Seashore

Gtr.

Bass

D. S.

Perc.

© www.ChorusOnline.com / 0031 (0) 6 - 41 57 77 56

Can't feel my face 5

03 SATB Combo Eb

Verse 2

57

S she'll be the death of me at least we'll both be numb. And she'll always get the best of me the worst is yet to come. All the mis-

A she'll be the death of me at least we'll both be numb. And she'll always get the best of me the worst is yet to come. All the mis-

T at least we'll both be numb. the worst is yet to come. All the mis-

B at least we'll both be numb. the worst is yet to come. All the mis-

Eb

G F A^m

P.C.

Synth

Gr. *El. Guitar (Wah-wah)*

Bass

D.S.

Perc.

65

S - er - y was nec - es - sar - ry when we're deep in love. This I know. Girl. She told me don't

A - er - y was nec - es - sar - ry when we're deep in love. This I know. Girl. She told me don't

T - er - y was nec - es - sar - ry when we're deep in love. This I know. Girl I know. She told me don't

B - er - y was nec - es - sar - ry when we're deep in love. This I know. Girl I know. She told me don't

Eb

G F A^m

P.C.

Synth

Gr.

Bass

D.S.

Perc.

Can't feel my face 7

03 SATB Combo Eb

Chorus 2

89 Handclap

S but I love it but I love it.

A but I love it but I love it.

T I can't feel my face when I'm with you but I love it but I love it, oh.

B I can't feel my face when I'm with you but I love it but I love it, oh.

Eb G F A^m

P.C.

Synth

Gr.

Bass

D.S.

Perc. (Handclap)

97 Handclap

S I can't feel my face but I love it. I can't feel my face

A I can't feel my face but I love it. I can't feel my face

T I can't feel my face when I'm with you but I love it but I love it, oh.

B I can't feel my face when I'm with you but I love it but I love it, oh.

Eb G F A^m

P.C.

Synth Warm Pad

Gr.

Bass

D.S.

Perc.

© www.ChorusOnline.com / 0031 (0) 6 - 41 57 77 56



Can't feel my face 9

03 SATB Combo Eb

Interlude

121

S Ah. Ooh.

A Ah. Ooh.

T She told me don't

B She told me don't

Eb G F A^m

P.C.

Synth Saw wave

Gtr. Saw wave

Bass

D.S. Optional

Perc. Bongo's

Pre-Chorus 3

129

S We both know we

A We both know we

T wor - ry a - bout it. She told me don't wor - ry no more.

B wor - ry a - bout it. She told me don't wor - ry no more.

Eb G F A^m

P.C.

Synth Warm Pad

Gtr. Square wave

Bass

D.S.

Perc.

© www.ChorusOnline.com / 0031 (0) 6 - 41 57 77 56

Can't feel my face 11

03 SATB Combo Eb

155

S
A
T
B

Said I ___ can't feel my face but I love ___ it but I love ___ it. I ___ can't feel ___ my face

I can't feel my face when I'm with you ___ but I love ___ it but I love ___ it. Oh. ___

I can't feel my face when I'm with you ___ but I love ___ it ___ girl I love ___ it. ___

Eb
G F A^m

P.C.

Synth
Warm Pad

Gr.
Bass
D.S.
Perc.

Chorus 5

163

S
A
T
B

I'm ___ with ___ you ___ but I love ___ it but I love ___ it I ___ can't feel ___ my face

I'm ___ with ___ you ___ but I love ___ it but I love ___ it I ___ can't feel ___ my face

I can't feel my face when I'm with you ___ but I love ___ it but I love ___ it.

I can't feel my face when I'm with you ___ Ahhh. but I love ___ it girl ___ but I love ___ it girl.

Eb
G F A^m

P.C.

Synth

Gr.
Bass
D.S.
Perc.

© www.ChorusOnline.com / 0031 (0) 6 - 41 57 77 56



Pre-Chorus 1

Can't feel my face 3
04 SATB 4 extra staves

21

S Do... She told me don't wor - ry a - bout it. She told me don't wor - ry no more.

A Do... *Finger snap*

T Yeah... This I know... *Finger snap*

B Yeah... This I know... She told me don't wor - ry a - bout it. She told me don't wor - ry no more.

1

2

3

4

P.C. A m G F A m

Synth *Scadbury* *Warm pad* *Square wave*

Ctr. 8

Bass *(Finger snap)*

D. S. *(Finger snap)*

Perc. *(Finger snap)*

Chorus 1

Can't feel my face 5
04 SATB 4 extra staves

41 Handclap

S
Handclap

A
Handclap

T
g
I can't feel my face when I'm with you — but I love — it but I love — it but I love — it

B
I can't feel my face when I'm with you — but I love — it but I love — it oh — I can't feel my face when I'm with

1
2
3
4

G F A m G

Synth
Warm Pad

P.C.

Dr.

Bass

D. S.
(Handclap)

Perc.
(Handclap)

Can't feel my face 7
04 SATB 4 extra staves

Sheet music for SATB 4 voices and 4 extra staves. The score includes vocal parts (Soprano, Alto, Tenor, Bass) and instrumental parts (Piano, Percussion, Synth, Bass, Guitar). The lyrics are: "ways get the best of me the worst is yet to come. All the mis-er-y was nec-es-sar-ry when we're deep in love. This I know. Girl - ways get the best of me the worst is yet to come. All the mis-er-y was nec-es-sar-ry when we're deep in love. This I know. Girl - the worst is yet to come. All the mis-er-y was nec-es-sar-ry when we're deep in love. This I know. Girl -". The score is divided into four systems, each with a key signature change: Am, G, F, and Am.

Chorus 3

Can't feel my face 11
04 SATB 4 extra staves

10/

S
but I love — it. I — can't feel — my face I'm — with — you — but I love — it

A
but I love — it. I — can't feel — my face I'm — with — you — but I love — it

T
— it but I love — it, oh — I can't feel my face when I'm with you — but I love — it

B
— it but I love — it, oh — I can't feel my face when I'm with you — Ahhh But I love — it girl — but I love

1
2
3
4

P.C.
Am G F Am

Synth

Dr.
8

Bass

D. S.

Perc.

Can't feel my face 13
04 SATB 4 extra staves

Interlude

Pre-Chorus 3

121

S. _____
A. _____
T. _____
B. _____

1
2
3
4

G F A^m G

Slow wave
Slow wave
Warm Pad
Square wave

Optional
Bongos

P.C. 8

She told me don't worry about
She told me don't worry about

Can't feel my face 15

04 SATB 4 extra staves

Chorus 4

141

S
nev - er be a - lone oh oh ooh I can't feel my face but I love

A
nev - er be a - lone oh oh ooh I can't feel my face but I love

T
nev - er be a - lone oh oh ooh I can't feel my face when I'm with you but I love

B
nev - er be a - lone oh oh ooh I can't feel my face when I'm with you

1
2
3
4

P.C.
A m G F

Synth
guitar

Dr.
8

Bass

D. S.
(Handclap)

Perc.

Can't feel my face 19
04 SATB 4 extra slaves

Intro

179 Handclap

S
A
T
B

Handclap

(Op.)
ahhh
ahhh
ahhh
ahhh
uhhh
uhhh
uhhh
uhhh
uh
uh
uhm ah
ahhh
ahhh
Hey!

(Op.)
ahhh
ahhh
ahhh
ahhh
uhhh
uhhh
uhhh
uhhh
uh
uh
uhm ah
ahhh
ahhh
Hey!

ahhh
ahhh
ahhh
ahhh
uhhh
uhhh
uhhh
uhhh
uh
uh
uhm ah
ahhh
ahhh
Hey!

ahhh
ahhh
ahhh
ahhh
uhhh
uhhh
uhhh
uhhh
uh
uh
uhm ah
ahhh
ahhh
Hey!

1
2
3
4

G
F
A m

P.C.
Bass
D.S.
Perc.
Synth
Gtr.



05 SATB small Combo

Can't feel my face

- The Weeknd -

Words and Music by Ali Payami, Savan Kotecha,
Max Martin, Abel Tesfaye, Peter Svensson
Arranged by Hans Reintjes
Original Key A minor

$\text{♩} = 108$
Intro

Soprano
Doo doo doo doo doo

Alto
Doo doo doo doo doo

Tenor
Doo doo doo doo doo

Bass
Doo doo doo doo doo

Piano Combo
G Polysynth F A^m

Guitar

Bass Guitar

Drum Set

Percussion

© www.ChorusOnline.com / 0031 (0) 6 - 41 57 77 56

Can't feel my face 3

05 SATB small Combo

16

S
Doo _____ doo. _____

A
Doo _____ doo. _____

T
But at least we'll both be beau - ti - ful and stay for - ev - er young. This I know.

B
Doo _____ doo. _____ This I know.

P.C.
G F

Gtr.

Bass

D. S.

Perc.

21

S
Doo _____ She told me don't wor - - ry
Finger snap

A
Doo _____ *Finger snap*

T
Yeah. _____ This I know. _____ *Finger snap*

B
Yeah. _____ This I know. _____ She told me don't wor - - ry

P.C.
A^m G

Gtr.

Bass

D. S.

Perc.

(Finger snap)

(Finger snap)

© www.ChorusOnline.com / 0031 (0) 6 - 41 57 77 56

Can't feel my face 5

05 SATB small Combo

36

S She told me you'll nev - - - er be a - lone oh oh ooh.

A

T

B She told me you'll nev - - - er be a - lone oh oh ooh.

A^m

P.C.

Gtr.

Bass

D. S.

Perc.

Chorus 1

41 Handclap

S but I love__ it

A but I love__ it

T I can't feel my face when I'm with you__ but I love__ it

B I can't feel my face when I'm with you__ but I love__ it

G F A^m

P.C.

Gtr.

Bass

D. S.

Perc. (Handclap)

Can't feel my face 7

05 SATB small Combo

Verse 2

56

S And I know she'll be the death of me at least we'll both be numb. And she'll al -

A And I know she'll be the death of me at least we'll both be numb. And she'll al -

T oh. at least we'll both be numb.

B oh. at least we'll both be numb.

G F

P.C.

Gtr. *El. Guitar (Wah-wah)*

Bass

D. S.

Perc.

61

S - - ways get the best of me the worst is yet to come. All the mis - er - y was nec -

A - - ways get the best of me the worst is yet to come. All the mis - er - y was nec -

T the worst is yet to come. All the mis - er - y was nec -

B the worst is yet to come. All the mis - er - y was nec -

A^m G

P.C.

Gtr.

Bass

D. S.

Perc.

© www.ChorusOnline.com / 0031 (0) 6 - 41 57 77 56



Can't feel my face 9

05 SATB small Combo

76

S She told me don't wor - ry no more. We both know we

A She told me don't wor - ry no more. We both know we

T She told me don't wor - ry no more. We both know we

B She told me don't wor - ry no more. We both know we

A^m

P.C.

Gtr.

Bass

D. S.

Perc.

81

S can't go with - out it. She told me you'll nev - er

A can't go with - out it. She told me you'll nev - er

T can't go with - out it. She told me you'll nev - er

B can't go with - out it. She told me you'll nev - er

G F A^m

P.C.

Gtr.

Bass

D. S.

Perc.

(Finger snap)

(Finger snap)

Can't feel my face 11

05 SATB small Combo

96 *Handclap*

S I _____ can't feel my _____ face _

A I _____ can't feel my _____ face _

T oh. _____ I can't feel my face when I'm with you _____ but I love

B oh. _____ I can't feel my face when I'm with you _____ but I love

P.C. G F

Gtr.

Bass

D. S.

Perc.

101 *Chorus 3*

S but I love _____ it. I _____ can't feel _____ my face

A but I love _____ it. I _____ can't feel _____ my face

T _____ it but I love _____ it, oh. _____ I can't feel my

B _____ it but I love _____ it, oh. _____ I can't feel my

P.C. A^m G

Gtr.

Bass

D. S.

Perc.

© www.ChorusOnline.com / 0031 (0) 6 - 41 57 77 56



Can't feel my face 13

05 SATB small Combo

116

S
but I love___ it but I love___ it, oh. ___

A
but I love___ it but I love___ it, oh. ___

T
but I love___ it but I love___ it, oh. ___

B
Ahhh. but I love___ it___ girl I love___ it. ___

P.C.
A^m

Gtr.

Bass

D. S.

Perc.

Interlude

121

S
Ah. ___ Ooh. ___

A
Ah. ___ Ooh. ___

T

B

P.C.
G F A^m

Gtr.

Bass
Optional

D. S.

Perc.
Bongo's

Can't feel my face 15

05 SATB small Combo

136

S
We both know we can't go with - out it. She told me you'll

A
We both know we can't go with - out it. She told me you'll

T
Can't go. She told me you'll

B
Can't go. She told me you'll

G F

P.C.

Gtr.

Bass

D. S.

Perc.

141

S
nev - - - er be a - lone oh oh

A
nev - - - er be a - lone oh oh

T
nev - - - er be a - lone oh oh

B
nev - - - er be a - lone oh oh

A^m

P.C.

Gtr.

Bass

D. S.

Perc.

Can't feel my face 17
05 SATB small Combo

156

S Said I ___ can't feel my face but I love ___ it but I love

A Said I ___ can't feel my face but I love ___ it but I love

T face when I'm with you ___ but I love ___ it but I love

B face when I'm with you ___ but I love ___ it ___

P.C.

Gtr.

Bass

D. S.

Perc.

F A^m

Chorus 5

161

S ___ it. I ___ can't feel ___ my face I'm ___ with ___ you ___

A ___ it. I ___ can't feel ___ my face I'm ___ with ___ you ___

T ___ it. Oh. ___ I can't feel my face when I'm with you ___

B girl I love ___ it. ___ I can't feel my face when I'm with you. ___

P.C.

Gtr.

Bass

D. S.

Perc.

G F

Can't feel my face 19

05 SATB small Combo

Outro

176

S
but I love ___ it. I ___ can't feel ___ my fa... Handclap

A
but I love ___ it. I ___ can't feel ___ my fa... Handclap

T
but I love ___ it. I ___ can't feel ___ my fa... Ahhh (Opt.)

B
_ you babe. Said when I'm with ___ you babe. Ahhh (Opt.)

P.C.
G

Gtr.

Bass

D. S.

Perc.

181

S
Hey!

A
Hey!

T
ahhh ahhh uhhh uh 't uhm ah ahhh ahhh. Hey!

B
ahhh ahhh uhhh uh 't uhm ah ahhh ahhh. Hey!

P.C.
F A^m

Gtr.

Bass

D. S.

Perc.

Pre-Chorus 1

21

S
Doo. _____ She told me don't wor - ry a - bout _____ it. She told me don't wor - ry no more.

A
Doo. _____ *Finger snap*

T
8
Yeah _____ This I know _____ *Finger snap*

B
Yeah _____ This I know _____ She told me don't wor - ry a - bout _____ it. She told me don't wor - ry no more.

1
2

A m G F A m

PC.
Gtr.
8
Bass
D. S.
Perc.
(Finger snap)

Chorus 1

4) Handclap

S but I love — it but I love — it

A Handclap but I love — it but I love — it

T 8 I can't feel my face when I'm with you — but I love — it but I love — it. oh — I can't feel my face when I'm with

B I can't feel my face when I'm with you — but I love — it but I love — it. oh — I can't feel my face when I'm with

1

2 G F Am G

P.C.

Gtr.

Bass

D. S.

Perc. (Handclap)

01

S - ways get the best ___ of me ___ the worst ___ is yet to come. All the mis - er - y ___ was nec - es - sar - ry when ___ we're deep in love. ___ This I know. ___ Girl. ___

A - ways get the best ___ of me ___ the worst ___ is yet to come. All the mis - er - y ___ was nec - es - sar - ry when ___ we're deep in love. ___ This I know. ___ Girl. ___

T - ways get the best ___ of me ___ the worst ___ is yet to come. All the mis - er - y ___ was nec - es - sar - ry when ___ we're deep in love. ___ This I know. ___ Girl I know.

B - ways get the best ___ of me ___ the worst ___ is yet to come. All the mis - er - y ___ was nec - es - sar - ry when ___ we're deep in love. ___ This I know. ___ Girl I know.

1

2

A m G F A m

P.C.

Gtr.

Bass

D. S.

Perc.

Can't feel my face 9
06 SATB small Combo extra staves

Chorus 2

81

S
can't — go with - out — it. She told me you'll nev - er be a lone oh oh ooh.

A
can't — go with - out — it. She told me you'll nev - er be a lone oh oh ooh.

T
can't — go with - out — it. She told me you'll nev - er be a lone oh oh ooh.

B
can't — go with - out — it. She told me you'll nev - er be a lone oh oh ooh. I can't feel my face when I'm with

1
2

P.C.
G F A^m G

Gtr.
8

Bass
(Finger snap)

D. S.
(Finger snap)

Perc.
(Handclap)

Handclap

Handclap

Can't feel my face 11
06 SATB small Combo extra staves

Chorus 3

101

S
but I love — it. I — can't feel — my face I'm — with — you — but I love — it but I love

A
but I love — it. I — can't feel — my face I'm — with — you — but I love — it but I love

T
— it but I love — it. oh — I can't feel my face when I'm with you — but I love — it but I love

B
— it but I love — it. oh — I can't feel my face when I'm with you — Ahhh But I love — it girl.

1
2

A m G F A m

P.C.
Gtr.
Bass
D. S.
Perc.

Interlude

Pre-Chorus 3

Can't feel my face 13
06 SATB small Combo extra staves

121

S Ah _____
Ooh _____

A Ah _____
Ooh _____

T _____
She told me don't wor - ry a - bout

B _____
She told me don't wor - ry a - bout

1 _____

2 _____

G F Am G

P.C. _____
G F Am G

Gtr. _____

Bass _____
Optional

D. S. _____

Perc. _____
Bongos

Can't feel my face 15
06 SATB small Combo extra staves

Chorus 4

141

S
nev - er be a lone oh oh
I can't feel my face but I love

A
nev - er be a lone oh oh
I can't feel my face but I love

T
nev - er be a lone oh oh
I can't feel my face when I'm with you but I love

B
nev - er be a lone oh oh
I can't feel my face when I'm with you

1
2

PC: A m G F

Gtr.
g

Bass
g

D. S.
(Handclap)

Perc.



07 SATB Piano Solo Advanced

Can't feel my face

- The Weeknd -

Words and Music by Ali Payami, Savan Kotecha,
Max Martin, Abel Tesfaye, Peter Svensson
Arranged by Hans Reintjes
Original Key A minor

$\text{♩} = 108$
Intro

Soprano
Doo doo doo doo doo

Alto
Doo doo doo doo doo

Tenor
Doo doo doo doo doo

Bass
Doo doo doo doo doo

Piano Solo Adv.
G F A^m

© www.ChorusOnline.com / 0031 (0) 6 - 41 57 77 56

19

S doo. Doo. She told me don't

A doo. Doo.

T 8 for - ev - er young. This I know. Yeah. This I know.

B doo. This I know. Yeah. This I know. She told me don't

F A^m

P.S.A.

Pre-Chorus 1

25

S wor - ry a - bout it. She told me don't wor - ry no more.

A *Finger snap*

T *Finger snap*

B wor - ry a - bout it. She told me don't wor - ry no more.

G F A^m

P.S.A.

Can't feel my face 5
07 SATB Piano Solo Advanced

43

S
but I love — it but I love — it.

A
but I love — it but I love — it.

T
8 you — but I love — it but I love — it, oh. —

B
you — but I love — it but I love — it, oh. —

F A^m

P.S.A.

49 Handclap

S
Handclap
but I love — it but I love

A
Handclap
but I love — it but I love

T
8 I can't feel my face when I'm with you — but I love — it but I love

B
I can't feel my face when I'm with you — but I love — it but I love

G F A^m

P.S.A.

© www.ChorusOnline.com / 0031 (0) 6 - 41 57 77 56

67

S
—we're deep in love. — This I know. — Girl. She told me don't

A
—we're deep in love. — This I know. — Girl. She told me don't

T
8
—we're deep in love. — This I know. — Girl I know. — She told me don't

B
—we're deep in love. — This I know. — Girl I know. — She told me don't

F A^m

P.S.A.

Pre-Chorus 2

73

S
wor - ry a - bout — it. She told me don't wor - ry no more.

A
wor - ry a - bout — it. She told me don't wor - ry no more.

T
8
wor - ry a - bout — it. She told me don't wor - ry no more.

B
wor - ry a - bout — it. She told me don't wor - ry no more.

G F A^m

P.S.A.

© www.ChorusOnline.com / 0031 (0) 6 - 41 57 77 56



Can't feel my face 9
07 SATB Piano Solo Advanced

91

S
but I love ___ it but I love ___ it.

A
but I love ___ it but I love ___ it.

T
8 you ___ but I love ___ it but I love ___ it, oh. ___

B
you ___ but I love ___ it but I love ___ it, oh. ___

F A^m

P.S.A.

97 Handclap

S
I ___ can't feel my ___ face but I love ___ it.

A
Handclap
I ___ can't feel my ___ face but I love ___ it.

T
8 I can't feel my face when I'm with you ___ but I love ___ it but I love

B
I can't feel my face when I'm with you ___ but I love ___ it but I love

G F A^m

P.S.A.

© www.ChorusOnline.com / 0031 (0) 6 - 41 57 77 56

Can't feel my face 11
07 SATB Piano Solo Advanced

115

S
— you — but I love — it but I love — it, oh. —

A
— you — but I love — it but I love — it, oh. —

T
8
you — but I love — it but I love — it, oh. —

B
you. — Ahhh. but I love — it — girl I love — it. —

F A^m

P.S.A.

Interlude

121

S
Ah. — Ooh. —

A
Ah. — Ooh. —

T
8

B

G F A^m

P.S.A.

139

S
— it. She told me you'll nev - er be a - lone oh oh

A
— it. She told me you'll nev - er be a - lone oh oh

T
8
— She told me you'll nev - er be a - lone oh oh

B
— She told me you'll nev - er be a - lone oh oh

F A^m

P.S.A.

Chorus 4

145

S
ooh. I — can't feel my face but I love

A
ooh. I — can't feel my face but I love

T
8
ooh. I can't feel my face when I'm with you — but I love

B
ooh. I can't feel my face when I'm with you —

G F

P.S.A.

Chorus 5

163

S
I'm with you but I love it but I love

A
I'm with you but I love it but I love

T
8 I can't feel my face when I'm with you but I love it but I love

B
I can't feel my face when I'm with you. Ahhh. but I love it girl.

G F A^m

P.S.A.

169

S
it I can't feel my face I'm with you but I love

A
it I can't feel my face I'm with you but I love

T
8 it. I can't feel my face when I'm with you but I love

B
but I love it girl. I can't feel my face but.

G F

P.S.A.



08 SATB Piano Solo Intermediate

Can't feel my face

- The Weeknd -

Words and Music by Ali Payami ,Savan Kotecha,
Max Martin, Abel Tesfaye, Peter Svensson
Arranged by Hans Reintjes
Original Key A minor

$\text{♩} = 108$
Intro

Soprano

Alto

Tenor

Bass

G F A^m

Piano Intermediate

© www.ChorusOnline.com / 0031 (0) 6 - 41 57 77 56

Can't feel my face 3
08 SATB Piano Solo Intermediate

19

S doo. Doo. She told me don't

A doo. Doo.

T for - ev - er young. This I know. Yeah. This I know.

B doo. This I know. Yeah. This I know. She told me don't

F A^m

P. I.

Pre-Chorus 1

25

S wor - ry a - bout it. She told me don't wor - ry no more.

A *Finger snap*

T *Finger snap*

B wor - ry a - bout it. She told me don't wor - ry no more.

G F A^m

P. I.

Can't feel my face 5
08 SATB Piano Solo Intermediate

43

S
but I love ___ it but I love ___ it.

A
but I love ___ it but I love ___ it.

T
you ___ but I love ___ it but I love ___ it, oh. ___

B
you ___ but I love ___ it but I love ___ it, oh. ___

F A^m

P. I.

49 Handclap

S
Handclap
but I love ___ it but I love

A
Handclap
but I love ___ it but I love

T
I can't feel my face when I'm with you ___ but I love ___ it but I love

B
I can't feel my face when I'm with you ___ but I love ___ it but I love

G F A^m

P. I.

© www.ChorusOnline.com / 0031 (0) 6 - 41 57 77 56

67

S
A
T
B

—we're deep in love. — This I know. — Girl. — She told me don't

—we're deep in love. — This I know. — Girl. — She told me don't

—we're deep in love. — This I know. — Girl I know. — She told me don't

—we're deep in love. — This I know. — Girl I know. — She told me don't

F A^m

P. I.

Pre-Chorus 2

73

S
A
T
B

wor - ry a - bout — it. She told me don't wor - ry no more.

wor - ry a - bout — it. She told me don't wor - ry no more.

wor - ry a - bout — it. She told me don't wor - ry no more.

wor - ry a - bout — it. She told me don't wor - ry no more.

G F A^m

P. I.

© www.ChorusOnline.com / 0031 (0) 6 - 41 57 77 56

Can't feel my face 9
08 SATB Piano Solo Intermediate

91

S
but I love ___ it but I love ___ it.

A
but I love ___ it but I love ___ it.

T
you ___ but I love ___ it but I love ___ it, oh. ___

B
you ___ but I love ___ it but I love ___ it, oh. ___

F A^m

P. I.

97 Handclap

S
I ___ can't feel my ___ face but I love ___ it.

A
Handclap
I ___ can't feel my ___ face but I love ___ it.

T
I can't feel my face when I'm with you ___ but I love ___ it but I love

B
I can't feel my face when I'm with you ___ but I love ___ it but I love

G F A^m

P. I.

© www.ChorusOnline.com / 0031 (0) 6 - 41 57 77 56

Can't feel my face 11
08 SATB Piano Solo Intermediate

115

S
— you — but I love — it but I love — it, oh. —

A
— you — but I love — it but I love — it, oh. —

T
you — but I love — it but I love — it, oh. —

B
you. — Ahhh. but I love — it — girl I love — it. —

F A^m

P. I.

Interlude

121

S
Ah. — Ooh. —

A
Ah. — Ooh. —

T

B

G F A^m

P. I.

139

S
— it. She told me you'll nev - er be a - lone oh oh

A
— it. She told me you'll nev - er be a - lone oh oh

T
— She told me you'll nev - er be a - lone oh oh

B
— She told me you'll nev - er be a - lone oh oh

P. I.
F A^m

Chorus 4

145

S
ooh. I — can't feel my face but I love

A
ooh. I — can't feel my face but I love

T
ooh. I can't feel my face when I'm with you — but I love

B
ooh. I can't feel my face when I'm with you —

P. I.
G F

Chorus 5

163

S
I'm with you but I love it but I love

A
I'm with you but I love it but I love

T
I can't feel my face when I'm with you but I love it but I love

B
I can't feel my face when I'm with you. Ahhh. but I love it girl.

G F A^m

P. I.

169

S
it I can't feel my face I'm with you but I love

A
it I can't feel my face I'm with you but I love

T
it. I can't feel my face when I'm with you but I love

B
but I love it girl. I can't feel my face but.

G F

P. I.



09 SATB

Can't feel my face

- The Weeknd -

*Words and Music by Ali Payami, Savan Kotecha,
Max Martin, Abel Tesfaye, Peter Svensson
Arranged by Hans Reintjes
Original Key A minor*

$\text{♩} = 108$

Intro

Soprano
Doo _____ doo doo doo _____ doo.

Alto
Doo _____ doo doo doo doo _____ doo.

Tenor
Doo _____ doo doo doo doo _____ doo.

Bass
Doo _____ doo doo doo _____ doo.

© www.ChorusOnline.com / 0031 (0) 6 - 41 57 77 56

16

S
Doo _____ doo. _____

A
Doo _____ doo. _____

T
8
But at least _____ we'll both be beau - ti - ful _____ and stay _____ for - ev - er young.

B
Doo _____ doo. _____

20

S
Doo. _____ She told me don't

A
Doo. _____

T
8
This I know. _____ Yeah. _____ This I know. _____

B
This I know. _____ Yeah. _____ This I know. _____ She told me don't

Chorus 1

37 *Handclap*

S
nev - er be a - lone oh oh ooh.

A
Handclap
ooh.

T
ooh. I can't feel my

B
nev - er be a - lone oh oh ooh. I can't feel my

42

S
but I love ___ it but I love

A
but I love ___ it but I love

T
face when I'm with you ___ but I love ___ it but I love

B
face when I'm with you ___ but I love ___ it but I love

Verse 2

57

S she'll be the death ___ of me ___ at least ___ we'll both be numb. And she'll al -

A she'll be the death ___ of me ___ at least ___ we'll both be numb. And she'll al -

T at least ___ we'll both be numb.

B at least ___ we'll both be numb.

61

S - ways get the best ___ of me ___ the worst ___ is yet to come. All the mis-

A - ways get the best ___ of me ___ the worst ___ is yet to come. All the mis-

T the worst ___ is yet to come. All the mis-

B the worst ___ is yet to come. All the mis-

74

S
a - bout ___ it. She told me don't wor - ry no more. ___

A
a - bout ___ it. She told me don't wor - ry no more. ___

T
8
a - bout ___ it. She told me don't wor - ry no more. ___

B
a - bout ___ it. She told me don't wor - ry no more. ___

80

S
We both know we can't go with - out ___ it. She told me you'll

A
We both know we can't go with - out ___ it. She told me you'll

T
8
We both know we can't go with - out ___ it. She told me you'll

B
We both know we can't go with - out ___ it. She told me you'll

95 *Handclap*

S
— it. I _____ can't feel my

A
— it. I _____ can't feel my

T
8 — it, oh. — I can't feel my face when I'm with you —

B
— it, oh. — I can't feel my face when I'm with you —

100

S
— face but I love — it. I —

A
— face but I love — it. I —

T
8 but I love — it but I love — it,

B
but I love — it but I love — it,

112

S
— can't feel my face — I'm with you —

A
— can't feel my face — I'm with you —

T
8
I can't feel my face when I'm with you —

B
— it girl. — I can't feel my face when I'm with you. —

116

S
but I love it but I love it,

A
but I love it but I love it,

T
8
but I love it but I love it,

B
Ahhh. but I love it girl I love

133

S We both know we can't go with-out

A We both know we can't go with-out

T wor - ry no more. — Can't go. —

B wor - ry no more. — Can't go. —

139

S — it. She told me you'll nev - er be a - lone oh oh

A — it. She told me you'll nev - er be a - lone oh oh

T — She told me you'll nev - er be a - lone oh oh

B — She told me you'll nev - er be a - lone oh oh

155

S
Said I ___ can't feel my face but I love ___ it

A
Said I ___ can't feel my face but I love ___ it

T
8
I can't feel my face when I'm with you but I love ___ it

B
I can't feel my face when I'm with you but I love

Chorus 5

160

S
but I love ___ it. I ___ can't feel ___ my face

A
but I love ___ it. I ___ can't feel ___ my face

T
8
but I love ___ it. Oh. ___ I can't feel my

B
___ it ___ girl I love ___ it. ___ I can't feel my

172

S
I'm ___ with ___ you ___ but I love ___ it

A
I'm ___ with ___ you ___ but I love ___ it

T
8
face when I'm with you ___ but I love ___ it

B
I ___ can't feel my face but. When I'm with

Outro

176

S
but I love ___ it. I ___ can't feel ___ my fa... *Handclap*

A
but I love ___ it. I ___ can't feel ___ my fa... *Handclap*

T
8
but I love ___ it. I ___ can't feel ___ my fa... Ahhh *(Opt.)*

B
Ahhh *(Opt.)*

___ you babe. Said when I'm with ___ you babe. Ahhh



10 C Instrument

Can't feel my face

- The Weeknd -

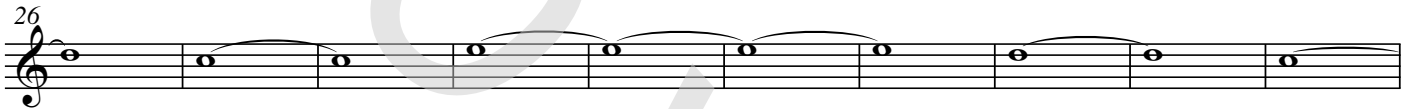
Words and Music by Ali Payami, Savan Kotecha,
Max Martin, Abel Tesfaye, Peter Svensson
Arranged by Hans Reintjes
Original Key A minor

♩ = 108

Intro



Pre-Chorus 1



Chorus 1

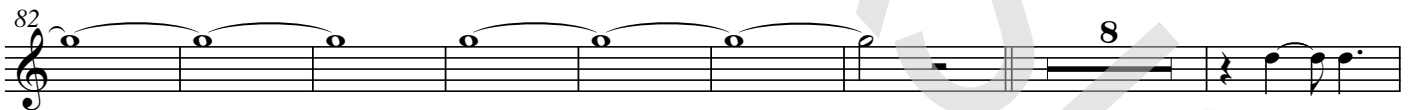


Verse 2

Pre-Chorus 2



Chorus 2



Chorus 3



© www.ChorusOnline.com / 0031 (0) 6 - 41 57 77 56



11 Bb Instrument

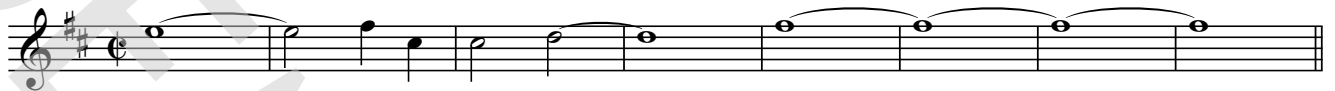
Can't feel my face

- The Weeknd -

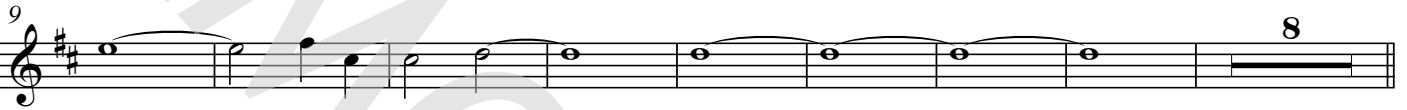
Words and Music by Ali Payami, Savan Kotecha,
Max Martin, Abel Tesfaye, Peter Svensson
Arranged by Hans Reintjes
Original Key A minor

♩ = 108

Intro



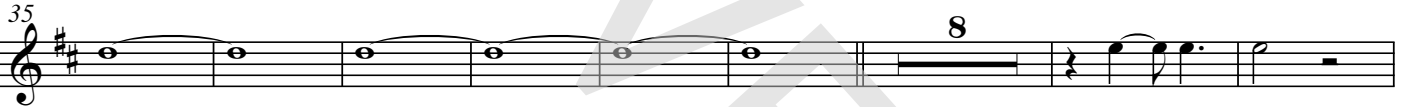
Verse 1



Pre-Chorus 1



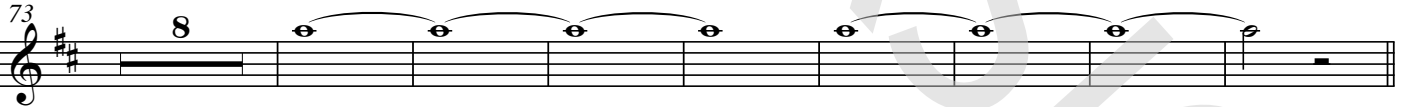
Chorus 1



Verse 2



Pre-Chorus 2



Chorus 2



Chorus 3



© www.ChorusOnline.com / 0031 (0) 6 - 41 57 77 56



12 Eb Instrument

Can't feel my face

- The Weeknd -

Words and Music by Ali Payami, Savan Kotecha,
Max Martin, Abel Tesfaye, Peter Svensson
Arranged by Hans Reintjes
Original Key A minor

♩ = 108

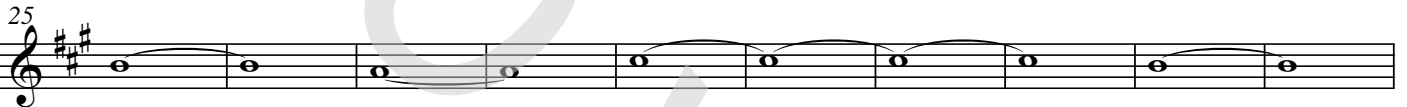
Intro



Verse 1



Pre-Chorus 1



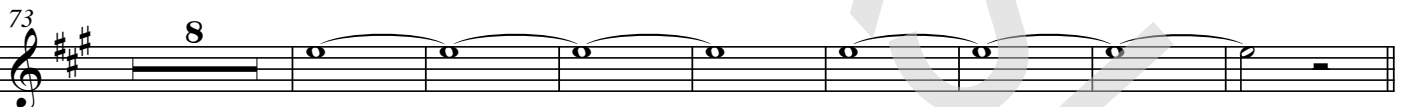
Chorus 1



Verse 2



Pre-Chorus 2



Chorus 2



Chorus 3



© www.ChorusOnline.com / 0031 (0) 6 - 41 57 77 56



13a Piano Solo Advanced

Can't feel my face

- The Weeknd -

Words and Music by Ali Payami, Savan Kotecha,
Max Martin, Abel Tesfaye, Peter Svensson
Arranged by Hans Reintjes
Original Key A minor

♩ = 108

Intro

G F A^m

Verse 1

G F A^m

G F A^m

Pre-Chorus 1

G F A^m

© www.ChorusOnline.com / 0031 (0) 6 - 41 57 77 56

Can't feel my face 3
13a Piano Solo Advanced

61 A^m *Unis. with vocals*

66 F A^m

Pre-Chorus 2

71 G F

76 A^m G

82 F A^m

Interlude

G

F

118

Pre-Chorus 3

A^m

G

F

A^m

125

G

F

A^m

135

Chorus 4

G

F

144

A^m

G

150

Can't feel my face

- The Weeknd -

Words and Music by Ali Payami, Savan Kotecha,
Max Martin, Abel Tesfaye, Peter Svensson
Arranged by Hans Reintjes
Original Key A minor



♩ = 108

Intro

G F A^m

Verse 1

G F A^m

G F A^m

Pre-Chorus 1

G F A^m

© www.ChorusOnline.com / 0031 (0) 6 - 41 57 77 56

61 A^m G

67 F A^m

Pre-Chorus 2

73 G F A^m

79 G F

Chorus 2

85 A^m G



13 Piano Combo

Can't feel my face

- The Weeknd -

Words and Music by Ali Payami, Savan Kotecha,
Max Martin, Abel Tesfaye, Peter Svensson
Arranged by Hans Reintjes
Original Key A minor

♩ = 108

Intro

Verse 1

G F A^m G
Polysynth

F A^m G F

10

Pre-Chorus 1

A^m G F

20

A^m G F A^m

29

© www.ChorusOnline.com / 0031 (0) 6 - 41 57 77 56



15 Synthesizer

Can't feel my face

- The Weeknd -

Words and Music by Ali Payami, Savan Kotecha,
Max Martin, Abel Tesfaye, Peter Svensson
Arranged by Hans Reintjes
Original Key A minor

♩ = 108

Intro

Saw wave

Saw wave

Verse 1

Warm Pad

Square wave

Pre-Chorus 1

Warm pad

Square wave

Seashore

Seashore

© www.ChorusOnline.com / 0031 (0) 6 - 41 57 77 56



16 Guitar

Can't feel my face

- The Weeknd -

Words and Music by Ali Payami ,Savan Kotecha,
Max Martin, Abel Tesfaye, Peter Svensson
Arranged by Hans Reintjes
Original Key A minor

♩ = 108

Intro

Verse 1

Pre-Chorus 1

Chorus 1

Verse 2

El. Guitar (Wah-wah)

8 16 16 16 2

60

Pre-Chorus 2

67

74

81

Chorus 2

Chorus 3

88 16

110

© www.ChorusOnline.com / 0031 (0) 6 - 41 57 77 56



17 Bass Guitar

Can't feel my face

- The Weeknd -

Words and Music by Ali Payami, Savan Kotecha,
Max Martin, Abel Tesfaye, Peter Svensson
Arranged by Hans Reintjes
Original Key A minor

$\text{♩} = 108$

Intro

G F A^m

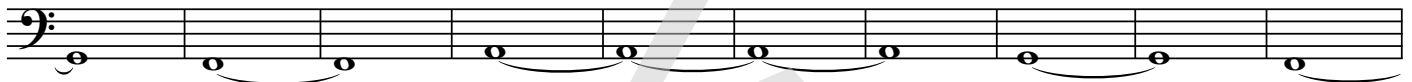
Verse 1

G



F A^m G F

10



A^m G F A^m

Pre-Chorus 1

20



G F A^m

30



Chorus 1

G F A^m

40



G F

46



A^m G

52



© www.ChorusOnline.com / 0031 (0) 6 - 41 57 77 56

Drumkit/Percussion

Hi-Hat closed
Hi-Hat open
High Tom
Mid Tom
Low Tom
Floor Tom
Ride Cymbal
Ride Bell/Cup
Crash Cymbal
Splash Cymbal
Triangle mute
Bassdrum (Kick)
Snaredrum
Hi-Hat Foot
Tambourine Beating
Triangle open

Shaker (eggs)
Claves
High Timbale
Sleigh Bells
Bell Tree
Maracas
Wind Chimes
Handclap
Conga Cabasa
Guro
Woodblock High
Woodblock Low
Timbale Low
Agogo High
Agogo Low

Drumkit/Percussion

Hi-Hat closed
Hi-Hat open
High Tom
Mid Tom
Low Tom
Floor Tom
Ride Cymbal
Ride Bell/Cup
Crash Cymbal
Splash Cymbal
Triangle mute
Bassdrum (Kick)
Snaredrum
Hi-Hat Foot
Tambourine Beating
Triangle open

- Shaker (eggs)
- Claves
- High Timbale
- Sleigh Bells
- Bell Tree
- Maracas
- Wind Chimes

Cowbell
Handclap
Conga Cabasa
Guro
Woodblock High
Woodblock Low
Timbale Low
Agogo High
Agogo Low



19 Percussion

Can't feel my face

- The Weeknd -

Words and Music by Ali Payami, Savan Kotecha,
Max Martin, Abel Tesfaye, Peter Svensson
Arranged by Hans Reintjes
Original Key A minor

♩ = 108

Intro

Verse 1

Pre-Chorus 1

8

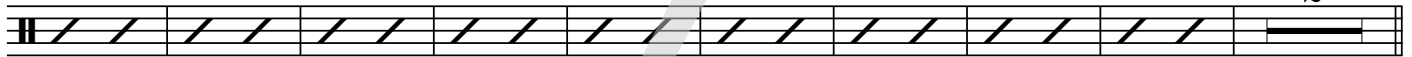
16

(Finger snap)



30

2



Chorus 1

41 (Handclap)



49



Verse 2

57



65



Pre-Chorus 2

73



© www.ChorusOnline.com / 0031 (0) 6 - 41 57 77 56

Can't feel my face

- The Weeknd -

Words and Music by Ali Payami, Savan Kotecha,
Max Martin, Abel Tesfaye, Peter Svensson
Arranged by Hans Reintjes
Original Key A minor

♩ = 108
Intro

G F A^m

And I know

Verse 1

9 G F A^m

she'll be the death ___ of me ___ at least ___ we'll both be numb. And she'll al - ways get the best

14 G

___ of me ___ the worst ___ is yet to come. But at least ___ we'll both be beau - ti - full ___ and stay

19 F A^m

___ for ev - er young. This I know ___ This I know. ___ She told me don't

Pre-Chorus 1

25 G F A^m

wor - ry a - bout ___ it. She told me don't wor - ry no more. ___

32 G F A^m

We both know we can't go with - out ___ it. She told me you'll nev - er



21 Empty Paper

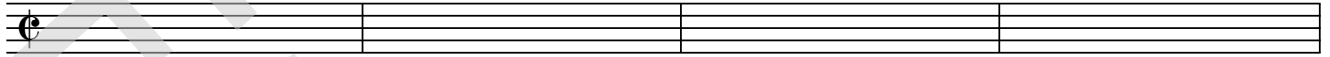
Can't feel my face

- The Weeknd -

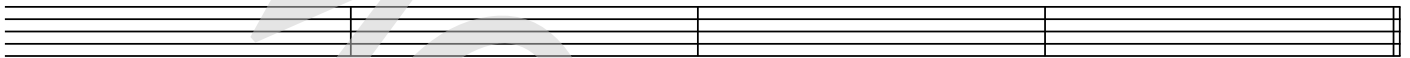
Words and Music by Ali Payami ,Savan Kotecha,
Max Martin, Abel Tesfaye, Peter Svensson
Arranged by Hans Reintjes
Original Key A minor

$\text{♩} = 108$

Intro

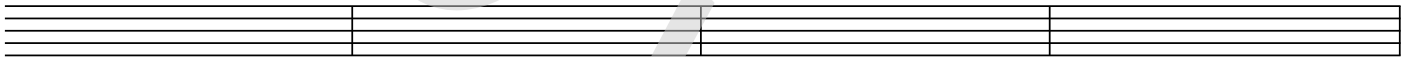


5



Verse 1

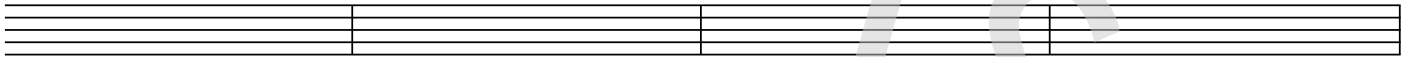
9



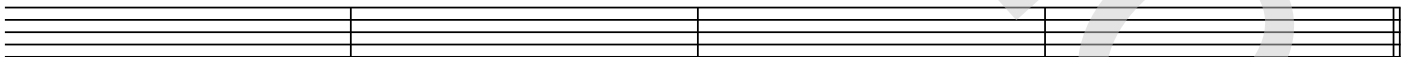
13



17

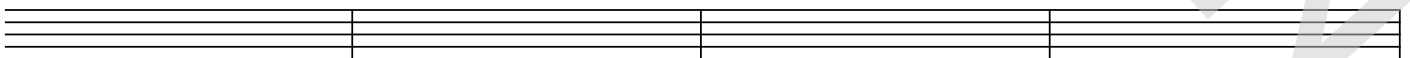


21

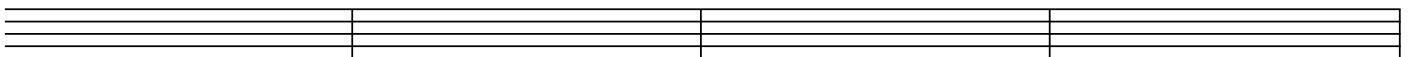


Pre-Chorus 1

25



29



© www.ChorusOnline.com / 0031 (0) 6 - 41 57 77 56

22 Lyrics

Can't feel my face

- The Weeknd -

chorus[®]

online

*Words and Music by Ali Payami ,Savan Kotecha,
Max Martin, Abel Tesfaye, Peter Svensson
Arranged by Hans Reintjes
Original Key A minor*

Intro

Verse 1

And I know she'll be the death of me at least we'll both be numb.
And she'll always get the best of me the worst is yet to come.
But at least we'll both be beautiful and stay forever young.
This I know. Yeah. This I know.

Pre-chorus 1

She told me don't worry about it.
She told me don't worry no more.
We both know we can't go without it.
She told me you'll never be alone oh oh ooh.

Chorus 1

I can't feel my face when I'm with you but I love it but I love it.
I can't feel my face when I'm with you
but I love it but I love it, oh.

Verse 2

And I know she'll be the death of me at least we'll both be numb.
And she'll always get the best of me the worst is yet to come.
All the misery was necessary when we're deep in love.
This I know. Girl, I know

Pre-chorus 2

Chorus 2

Chorus 3

Interlude

Pre-chorus 3

Chorus 4

Chorus 5

I can't feel my face when I'm with you
but I love it but I love it.
I can't feel my face when I'm with you
but I love it but I love it.
I can't feel my fa...

Outro

Hey!