



You take my breath away – Queen SSMMAATB

Pag.

02	Full score combo
11	Full score vocals (SSMMAATB) piano advanced
21	Full score vocals (SSMMAATB) piano moderated
31	Vocals (SSMMAATB)
40	Piano advanced
45	Piano moderated
50	Guitar
51	Bassguitar
52	Drumkit
54	Leadsheet (melody, lyrics, chords)
58	Empty paper
61	Lyrics

You Take My Breath Away

- Queen -

Words and Music by Freddy Mercury
Arranged by Hans Kaldeway
Original Key

Rubato

Soprano
oo a - way

Mezzo
oo all a - way

Alto
oo a - way

Tenor
8
Take it take it all a - way

Bass
mf
Take it take it all a - way

S
6
oo a - way oo oo

M
oo take my breath a - way oo

A
oo take my breath a - way oo

T
8
oo take my breath a - way oo

B
take my breath a - way oo

You Take My Breath Away 3
01 SSMMAATB Combo C

30

M
Ev' - ry time you make a move you des - troy my mind and the way you touch I lose con - trol

B
p
Ev' - ry time you make a move you des - troy my mind and the way you touch I lose con - trol

P.A.
Fm7 Bb7 Eb/G F#dim

34

M
and shi - ver deep in - side You take my breath a - way

B
and shi - ver deep in - side You take my breath a - way

P.A.
Fm7 Cm Fm6/C

38

M
You can re - duce me to tears witha sin - gle sigh

P.A.
Cm Fm6/C Cm Cm Fm6/C Cm Fm7/C C Fm6/C

You Take My Breath Away 5
01 SSMMAATB Combo C

M 54 *mf*

You take my breath a - way ————— So please don't

P.A. Cm Fm6/C Cm Fm6/C Cm

S 59 *p*

oo

M go. ————— don't leave me here all by my - self, I get ev - er so lone - ly from time to time

A *p*

oo

T *p*

oo

B *p*

oo

P.A. B \flat A \flat /B \flat B \flat 7 B \flat A \flat /B \flat B \flat 7 B \flat A \flat /B \flat B \flat 7 E \flat

You Take My Breath Away 7
01 SSMMAATB Combo C

M 72

take my breath a-way

P.A. Cm Fm6/C Cm Fm6/C Cm Cm Fm6/C Cm Fm7/C

Gtr. 8

Bass 8

Until m. 84: Play only when no guitar is available

S 78 *mp* *legatissimo*

M *mp* *legatissimo*

A *mp* *legatissimo*

T *mp* *legatissimo*

B *mp* *legatissimo*

P.A. Cm Fm6/C Cm B \flat A \flat /B \flat B \flat A \flat /B \flat B \flat A \flat /B \flat

Gtr. 8

Bass 8

You Take My Breath Away 9
01 SSMMAATB Combo C

92

S
found you I love you

M
found you I love you

A
found you I love you

T
found you I love you

B
found you I love you

P.A.
Cm Fm6/C Cm Fm6/C Cm

Bass

The image shows a musical score for a vocal ensemble. It includes five vocal staves (Soprano, Mezzo, Alto, Tenor, Bass), a Piano/Arrangement (P.A.) staff, and a Bass staff. The lyrics are 'found you I love you'. The score includes dynamic markings like 'pp' and chord symbols Cm and Fm6/C. A large watermark 'www.ChorusOnline.com' is visible across the page.

You Take My Breath Away

- Queen -

Words and Music by Freddy Mercury
Arranged by Hans Kaldeway
Original Key

Rubato

Musical score for Soprano, Mezzo, Alto, Tenor, and Bass voices, measures 1-5. The score is in 4/4 time with a key signature of two flats (B-flat and E-flat). The tempo/mood is marked 'Rubato'. The dynamics are marked 'mf' (mezzo-forte). The lyrics are: Soprano: oo a - way; Mezzo: oo all a - way; Alto: oo a - way; Tenor: Take it take it all a - way; Bass: Take it take it all a - way.

Musical score for Soprano, Mezzo, Alto, Tenor, and Bass voices, measures 6-10. The score is in 4/4 time with a key signature of two flats (B-flat and E-flat). The dynamics are marked 'mf' (mezzo-forte). The lyrics are: Soprano: oo a - way oo; Mezzo: oo take my breath a - way oo; Alto: oo take my breath a - way oo; Tenor: oo take my breath a - way oo; Bass: take my breath a - way oo.

You Take My Breath Away 3
02 SSMMAATB Piano Advanced

30

M
Ev' - ry time you make a move — you des - troy my — mind — and the way you touch I lose con - trol

B
p
Ev' - ry time you make a move — you des - troy my — mind — and the way you touch I lose con - trol

Fm7 B \flat 7 E \flat /G F \sharp dim

P.A

34

M
— and shi - ver — deep in - side — You take my breath a - way —

B
— and shi - ver — deep in - side — You take my breath a - way —

Fm7 Cm Fm6/C

P.A

38

M
You can re - duce me to tears — with a sin - gle sigh —

Cm Fm6/C Cm Cm Fm6/C Cm Fm7/C C Fm6/C

P.A

You Take My Breath Away 5
02 SSMMAATB Piano Advanced

51

S
M
A
T
B

If you dis - miss me from your love
You take my breath a - way

F#dim Fm7

P.A

55

S
M
A
T
B

oo
So please don't go, don't
oo
oo
oo

Cm Fm6/C Cm Fm6/C Cm Bb Ab/Bb Bb7

P.A

You Take My Breath Away 7
02 SSMMAATB Piano Advanced

69

S
sleep tell you that you just

M
till I find you to tell you that you just take my breath a - way

A
sleep tell you that you just

T
sleep tell you that you

B
sleep tell you that you just

P.A
F#dim Fm7

73

S

M

A

T

B

P.A
Cm Fm6/C Cm Fm6/C Cm Cm Fm6/C

You Take My Breath Away 9
02 SSMMAATB Piano Advanced

85 *mf* *cresc.*

S find you an - y - where you go ah

M find you an - y - where you go oo right un - til the ends of the earth

A find you an - y - where you go ah

T find you an - y - where you go oo

B find you an - y - where you go oo

A^b C7 Fm A^b0

P.A

89 *decresc.*

S get no sleep tell you when I've found you

M I get no sleep till I find you to tell you when I've found you

A get no sleep tell you when I've found you

T get no sleep tell you when I've found you

B get no sleep tell you when I've found you

E^b/G F[#]dim Fm7

P.A



03 SSMMAATB Piano Moderated

You Take My Breath Away

- Queen -

Words and Music by Freddy Mercury
Arranged by Hans Kaldewey
Original Key

Rubato

Soprano *mf*
oo a - way

Mezzo *mf*
oo all a - way

Alto *mf*
oo a - way

Tenor *mf*
8 Take it take it all a - way

Bass *mf*
Take it take it all a - way

S
oo a - way oo

M
oo take my breath a - way oo

A
oo take my breath a - way oo

T
8 oo take my breath a - way oo

B
take my breath a - way oo

You Take My Breath Away 3
03 SSMMAATB Piano Moderated

M 30

Ev' - ry time you make a move — you des - troy my — mind — and the way you touch I lose con - trol

B *p*

Ev' - ry time you make a move — you des - troy my — mind — and the way you touch I lose con - trol

Fm7 B \flat 7 E \flat /G F \sharp dim

P.M. 30

M 34

— and shi - ver — deep in - side — You take my breath a - way —

B — and shi - ver — deep in - side — You take my breath a - way —

Fm7 Cm Fm6/C

P.M. 34

M 38

You can re - duce me to tears — with a sin - gle sigh —

Cm Fm6/C Cm Cm Fm6/C Cm Fm7/C C Fm6/C

P.M. 38

You Take My Breath Away 5
03 SSMMAATB Piano Moderated

51

S
M
A
T
B

If you dis - miss me from your love
You take my breath a - way

F#dim Fm7

P.M

55

S
M
A
T
B

oo
So please don't go, don't
oo
oo
oo

Cm Fm6/C Cm Fm6/C Cm Bb Ab/Bb B7

P.M

You Take My Breath Away 7
03 SSMMAATB Piano Moderated

69

S
sleep tell you — that you just

M
— till I find — you to tell you — that you just take my breath a - way —

A
sleep tell you — that you just

T
sleep tell you — that you —

B
sleep tell you — that you just

P.M
F#dim Fm7

73

S

M

A

T

B

P.M
Cm Fm6/C Cm Fm6/C Cm Cm Fm6/C

You Take My Breath Away 9
03 SSMMAATB Piano Moderated

85 *mf* *cresc.*

S find you an - y - where you go ah

M find you an - y - where you go oo right un - til the ends of the earth

A find you an - y - where you go ah

T find you an - y - where you go oo

B find you an - y - where you go oo

A^b *C7* *Fm* *A^b°*

P.M

89 *decresc.*

S — get no sleep tell you when I've found you

M — I get no sleep till I find you to tell you when I've found you

A — get no sleep tell you when I've found you

T — get no sleep tell you when I've found you

B — get no sleep tell you when I've found you

E^b/G *F[#]dim* *Fm7*

P.M



04 SSMMAATB

You Take My Breath Away

- Queen -

Words and Music by Freddy Mercury
Arranged by Hans Kaldeway
Original Key

Rubato

Soprano *mf*
oo _____ oo _____ a - way _____

Mezzo *mf*
oo _____ all a - way _____

Alto *mf*
oo _____ a - way _____

Tenor *mf*
8 Take it take it all a - way _____

Bass *mf*
Take it take it all a - way _____

© www.ChorusOnline.com / 0031 (0) 6 - 41 57 77 56

You Take My Breath Away 3
04 SSMMAATB

M 14 **8** *mp*

Look in - to my eyes and you'll see I'm the on - ly one _____

M 25

You've cap - tured my love, sto - len my heart, changed my life.

M 29

Ev - ry time you make a move _____ you des - troy my _____ mind _____ and the way you touch

B *p*

Ev - ry time you make a move _____ you des - troy my _____ mind _____ and the way you touch

M 33

I lose con - trol _____ and shi - ver _____ deep in - side _____ You take my breath a - way _____

B

I lose con - trol _____ and shi - ver _____ deep in - side _____ You take my breath a - way _____

M 38

You can re - duce me to tears _____ with a sin - gle sigh _____

You Take My Breath Away 5
04 SSMMAATB

51

S

M

A

T

B

If you dis - miss me from your love You take my breath a - way

— If you dis - miss me from your love —

55

S

M

A

T

B

oo

oo

oo

oo

oo

oo

p

mf

p

p

So please don't go, don't leave me here all by my -

You Take My Breath Away 7
04 SSMMAATB

69

S
sleep tell you that you just

M
till I find you to tell you that you just take my breath a - way

A
sleep tell you that you just

T
sleep tell you that you

B
sleep tell you that you just

74

S
mp *legatissimo*
noh noh noh noh noh noh noh noh noh noh

M
mp *legatissimo*
noh noh

A
mp *legatissimo*
noh noh noh noh noh noh noh noh noh noh

T
mp *legatissimo*
noh noh noh noh noh noh noh noh noh noh

B
mp *legatissimo*
noh noh noh noh noh noh noh noh noh noh

You Take My Breath Away 9
04 SSMMAATB

89

S *decesc.*
— get no sleep tell you — when I've found you

M *decesc.*
— I get no sleep — till I find — you to tell you — when I've found you

A *decesc.*
— get no sleep tell you — when I've found you

T *decesc.*
get no sleep tell you — when I've found you

B *decesc.*
get no sleep tell you — when I've found you

93

S *pp* 2
I love you —

M *pp* 2
I love you —

A *pp* 2
I love you —

T *pp* 2
I love you —

B *pp* 2
I love you —



You Take My Breath Away

- Queen -

Words and Music by Freddy Mercury
Arranged by Hans Kaldeway
Original Key

Rubato

Use the "Piano Advanced" part when
no guitar or bass guitar is available

You Take My Breath Away 3
05 Piano Advanced

45 B° Cm $B^{\flat}7$ E^{\flat} A^{\flat}/B^{\flat}

49 $B^{\flat}7$ E^{\flat}/G $F^{\sharp dim}$ $Fm7$

53 Cm $Fm6/C$ Cm $Fm6/C$

57 Cm B^{\flat} A^{\flat}/B^{\flat} $B^{\flat}7$ B^{\flat} A^{\flat}/B^{\flat} $B^{\flat}7$

61 B^{\flat} A^{\flat}/B^{\flat} $B^{\flat}7$ E^{\flat} A^{\flat}

You Take My Breath Away 5
05 Piano Advanced

85 A^b C7 Fm A^b

89 E^b/G $F^\#dim$ Fm7

93 Cm Fm6/C Cm Fm6/C Cm



06 Piano Moderated

You Take My Breath Away

- Queen -

Words and Music by Freddy Mercury
Arranged by Hans Kaldeway
Original Key

Rubato

© www.ChorusOnline.com / 0031 (0) 6 - 41 57 77 56

You Take My Breath Away 3
06 Piano Moderated

45 B° Cm $B^{\flat}7$ E^{\flat} A^{\flat}/B^{\flat}

49 $B^{\flat}7$ E^{\flat}/G $F^{\sharp dim}$ $Fm7$

53 Cm $Fm6/C$ Cm $Fm6/C$

57 Cm B^{\flat} A^{\flat}/B^{\flat} $B^{\flat}7$ B^{\flat} A^{\flat}/B^{\flat} $B^{\flat}7$

61 B^{\flat} A^{\flat}/B^{\flat} $B^{\flat}7$ E^{\flat} A^{\flat}

You Take My Breath Away 5
06 Piano Moderated

85 A^b C7 Fm A^b

89 E^b/G $F^\#dim$ Fm7

93 Cm Fm6/C Cm Fm6/C Cm



07 Guitar

You Take My Breath Away

- Queen -

Words and Music by Freddy Mercury
Arranged by Hans Kaldewey
Original Key

Rubato

The sheet music is written for guitar in the key of B-flat major (two flats) and 4/4 time. It consists of six staves of music. The first staff starts with a treble clef, a key signature of two flats, and a 4/4 time signature. It contains a whole note chord with a '4' above it, followed by a 2/4 time signature and a whole rest, then another 4/4 time signature and a whole note chord with a '3' above it, followed by another 2/4 time signature and a whole rest, and finally a 4/4 time signature and a whole note chord. The second staff starts at measure 10 and contains a whole note chord with a '4' above it, followed by a double bar line, a whole note chord with a '20' above it, followed by a double bar line, a whole note chord with a '24' above it, followed by a double bar line, and a whole rest. The third staff starts at measure 59 and contains a whole note chord with a '5' above it, followed by a double bar line, a whole note chord with a '6' above it, followed by a double bar line, a whole note chord with a '5' above it, followed by a double bar line, and a quarter note followed by an eighth note. The fourth staff starts at measure 76 and contains a sequence of eighth notes: C4, D4, E4, F4, G4, A4, Bb4, C5, Bb4, A4, G4, F4, E4, D4, C4. The fifth staff starts at measure 80 and contains a sequence of notes: Bb4, A4, G4, F4, E4, D4, C4, Bb4, A4, G4, F4, E4, D4, C4, Bb4, A4, G4, F4, E4, D4, C4. The sixth staff starts at measure 84 and contains a whole note chord with a '8' above it, followed by a double bar line, a whole rest, followed by a double bar line, a whole note chord with a '4' above it, followed by a double bar line.

© www.ChorusOnline.com / 0031 (0) 6 - 41 57 77 56

You Take My Breath Away

- Queen -

Words and Music by Freddy Mercury
Arranged by Hans Kaldeway
Original Key

Rubato

4 3 4 20

34 24 5 6 5

75 8^{va}

Until m. 84: Play only when no guitar is available

79 (8^{va})

83 (8^{va}) (Play)

87

91 4

Drumkit/Percussion

Hi-Hat closed Hi-Hat open High Tom Mid Tom Low Tom Ride Cymbal Crash Cymbal Triangle mute

Snareclick Hi-Hat Foot Tambourine Beating Triangle open

Bassdrum (Kick) Snaredrum

Shaker (eggs)
Claves
High Timbale
Sleigh Bells
Bell Tree
Maracas
Wind Chimes

Handclap Conga Cabasa Guro Woodblock High Woodblock Low Timbale Low Agogo High Agogo Low



09 Drum Set

You Take My Breath Away

- Queen -

Words and Music by Freddy Mercury
Arranged by Hans Kaldeway
Original Key

Rubato

4 3 4 3 4 3 9

34 6 2 16 5 6 6 2 7

85 Cymbal

mallets

89 5 4

You Take My Breath Away

- Queen -

Words and Music by Freddy Mercury
Arranged by Hans Kaldeway
Original Key

Rubato

mf

oo _____ a-way _____

6

oo _____ a-way oo _____ oo _____

11

oo take my breath a-way _____

14

molto espressivo

Cm7 Cm7 Cm Fm6/C Cm Fm6/C

18

Cm Cm Fm6/C Cm Fm6/C Cm

22

mp

Cm Fm6/C Cm Fm7/C Cm Fm6/C

Look in - to my eyes and you'll see I'm the on - ly one _____



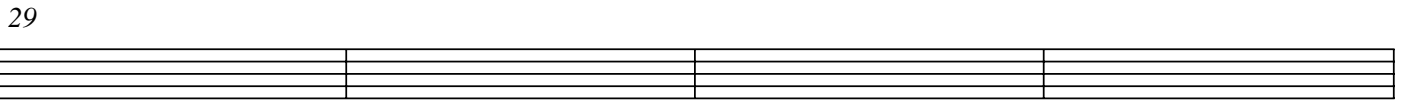
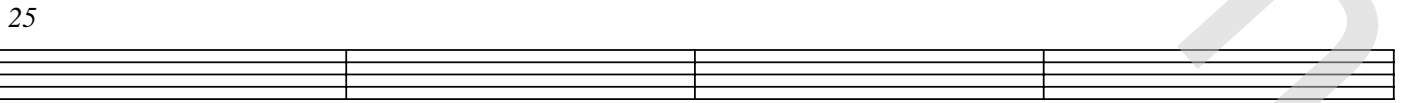
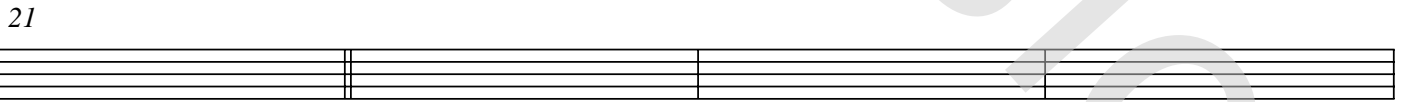
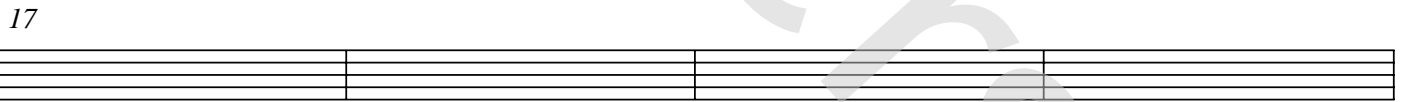
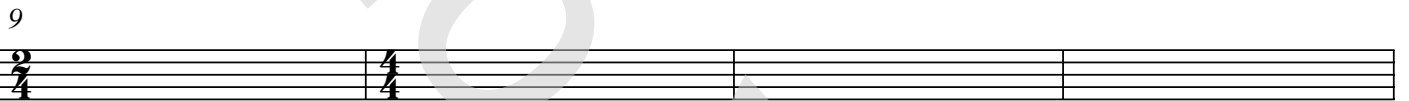
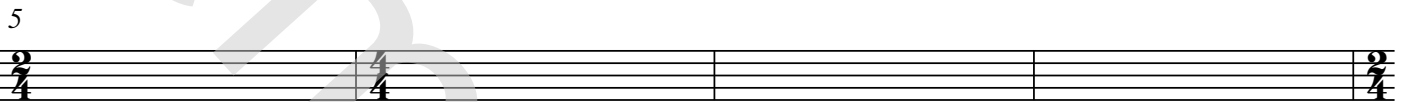
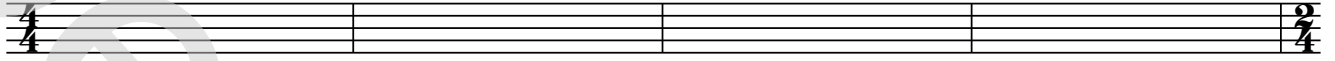
11 Empty Paper

You Take My Breath Away

- Queen -

Rubato

Words and Music by Freddy Mercury
Arranged by Hans Kaldeway
Original Key



12 Lyrics

chorus[®]
online

You Take My Breath Away

- Queen -

*Words and Music by Freddy Mercury
Arranged by Hans Kaldeway
Original Key*

Oo...oo away, oo away oo, take my breath away

Look into my eyes and you'll see
I'm the only one
You've captured my love
Stolen my heart
Changed my life.
Ev'ry time you make a move
You destroy my mind
And the way you touch
I lose control and shiver deep inside
You take my breath away

You can reduce me to tears
With a single sigh
Ev'ry breath that you take
Any sound that you make
Is a whisper in my ear
I could give up all my life for just one kiss
I would surely die
If you dismiss me from your love
You take my breath away

So please don't go
Don't leave me here all by myself
I get ever so lonely from time to time
I will find you
Anywhere you go, I'll be right behind you
Right until the ends of the earth
I get no sleep till I find you to tell you
that you just take my breath away

I will find you... Anywhere you go, I'll be right behind you
Right until the ends of the earth
I get no sleep till I find you to tell you
When I've found you
I love you